



EVOS
ALCHEMY

Site Address: Raghunathpur, Nandankanan Road, Bhubaneswar, Odisha 751 024.



EVOS
ALCHEMY

This document is for general information only and not a legal offering by the Company. Interested parties should independently verify all details with the Company before making any purchasing decisions. The visuals and information are indicative, may not represent actuals, and do not create warranties. The brochure is not an offer for sale, and the Company is not responsible for actions taken based on the material without independent verification.

| Email- enquiry@evosalchemy.com



www.evosalchemy.com



ORERA Registration No.: RP/19/2023/01077
Information available at website: <https://rera.odisha.gov.in/>



Scan to visit
the website



A NAME STEEPED IN THE MYSTIQUE OF
TRANSFORMING BASE ELEMENTS INTO GOLD.

'GOLD CLASS LIVING' SYMBOLISES
THE PROJECT'S PROMISE TO ELEVATE
EVERYDAY LIVING INTO
A GOLDEN STANDARD OF LUXURY.

'ALCHEMY'

TO THE ONES WHO HAVE TRAVELLED THE WORLD.
TO THE ONES WHO HOST CHAMPAGNE AND CAVIAR SOIREES.
TO THE ONES WHO OCCUPY CORNER OFFICES.
TO THE ONES WHO HOLD ELITE MEMBERSHIPS.
TO THE ONES WHO MAKE HEADLINES WHEREVER THEY GO.
TO THE ONES WHO SETTLE FOR NOTHING BUT THE BEST.

PRESENTING
AN UNRIVALLED
CLASS OF LIVING.



A woman with long, wavy hair, seen from behind, stands on a balcony. She is wearing a shimmering, gold sequined dress with a deep V-back. Her hands are resting on a dark, ornate metal railing. In the background, a city skyline is visible at night, with numerous lights creating a bokeh effect. The sky is a deep blue, and a bright, golden light source, possibly the setting or rising sun, is visible on the left side of the frame, casting a glow over the scene.

TOWERING
△ ABOVE THE CITY.

THE HIGHEST CLASS.

A woman with long, wavy brown hair is smiling broadly, looking off to the side. She is wearing a shimmering gold, one-shoulder dress and large, ornate earrings. She holds a flute glass of champagne in her right hand. In the background, another person is partially visible, also holding a champagne glass. The scene is set in a dimly lit room with numerous out-of-focus, warm-toned bokeh lights, creating a festive and elegant atmosphere. The overall color palette is dominated by gold, brown, and dark tones.

IN THE COMPANY OF
THE WELL-HEELED.

THE RICHEST CLASS.

A woman with her hair in a bun, wearing a green, backless dress with ruffled sleeves, stands in a lush green environment. A stream of golden dust or particles flows from her shoulder towards the right side of the frame. The background is filled with large, dark green leaves.

AMIDST A LUXURIANT GETAWAY.

THE GREENEST CLASS.

SPACES THAT INVITE AND ENCHANT.

THE GRANDEST CLASS.



IT'S TIME TO LIVE THE
TALLEST.
LARGEST.
GRANDEST.
FINEST.
CLASSIEST.
GREENEST.

PRESENTING
ODISHA'S

gold class
LIVING



EVOS
ALCHEMY

PALATIAL 3.5 BED RESIDENCES & PENTHOUSES
WITH GRAND SUNDECKS.

Nestled in Patia's posh neighbourhood and towering above the city, Evos Alchemy is for the city's elite. While the stunning architecture will give it a landmark status, sweeping views will bind you in a serene vibe. Step out of your lavish home and partake in immersive experiences that deliver a lifestyle par excellence.

Come live the Gold Class life.

A LIFESTYLE WORTH ITS WEIGHT IN GOLD.

The triangles in the logo design are reflective of Air, Water, Fire and Earth; symbols that were fairly consistent among alchemists where each symbol is a triangle.

These 4 triangles are also representational of the 4 towers of the project when viewed from the top angle, giving the identity a metaphoric as well as functional identity.

4 LUXURY TOWERS: AURUM • AURELIA • ALLURA • ASTRUM



GOLD-CLASS HALLMARKS.



ODISHA'S TALLEST
& LARGEST LANDMARK
WITH 4 TOWERS OF
42 STOREYS EACH



DESIGNED BY
WORLD-RENOWNED
ARCHITECT
SANJAY PURI



CONNECTED TO
THE CITY'S PRIME
DESTINATIONS AND
AFFLUENT POCKETS



PALATIAL
3.5 BED RESIDENCES &
PENTHOUSES WITH
GRAND SUNDECKS



6.9 ACRE ESTATE WITH
MORE THAN 70% OPEN
SPACES & LANDSCAPING
BY TECTONIX



OVER 30+
CURATED LIFESTYLE
INDULGENCES ACROSS
TWO LEVELS



A COMMUNITY OF
LIKE-MINDED ELITE
FROM DIFFERENT
WALKS OF LIFE



MULTIPLE
EV CHARGING
STATIONS



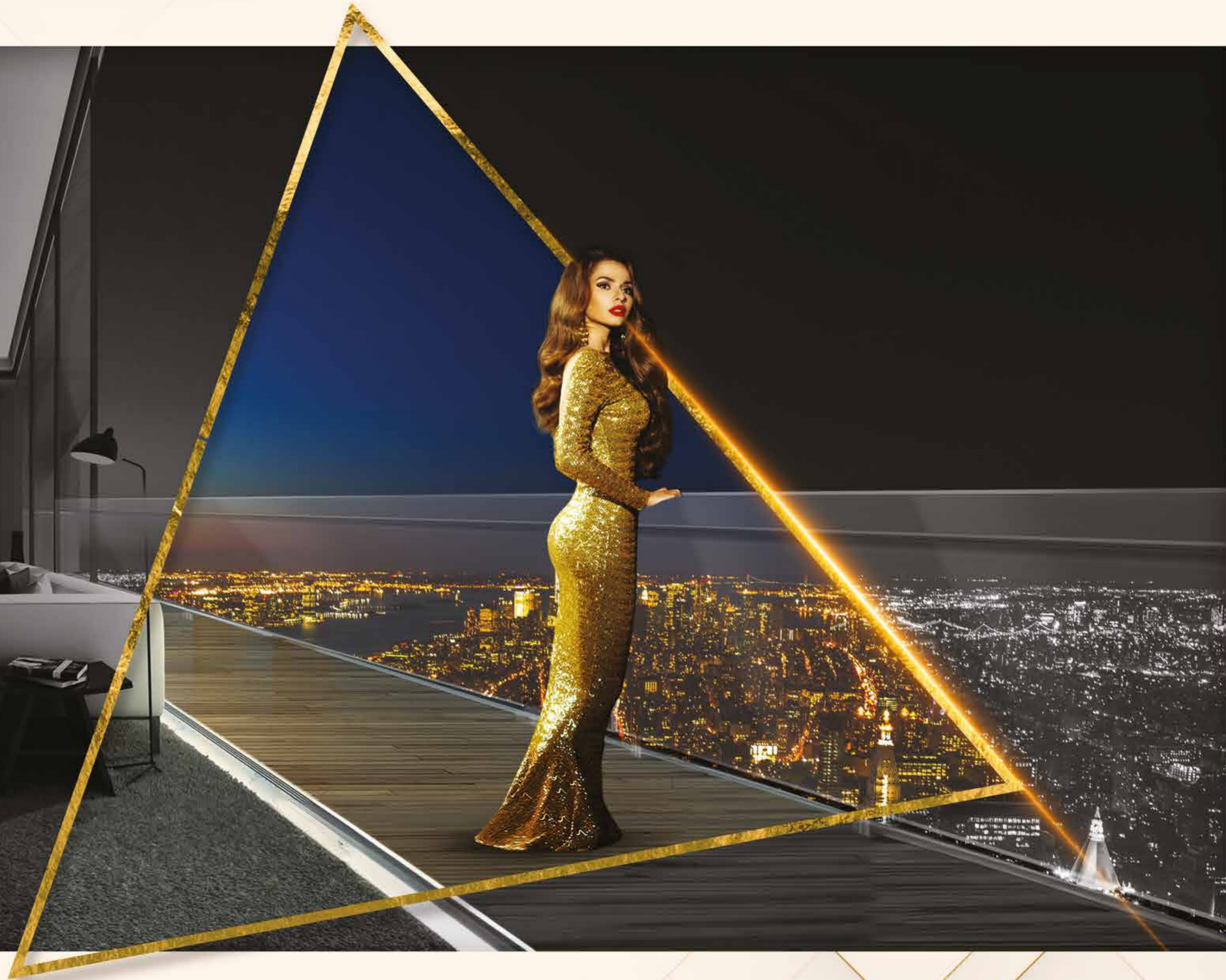
ADVANCED
3-TIER SECURITY
SYSTEM

THE TALLEST CLASS

OF ARCHITECTURAL MARVEL
DESIGNED BY SANJAY PURI.

— △ —
42-STOREY EDIFICE
RISING ABOVE THE CITY.

Representational Image





Artist's Impression

— △ —

THE PINNACLE OF DESIGN EXCELLENCE

The Evos Alchemy design features twisted cuboid volumes with large decks in a 28.5 lakh sq. ft. housing development with 42-storeyed apartment towers.





— △ —

**SPRAWLING
DECKS
PANORAMIC
VIEWS**

Savour magnificent vistas
while sipping your morning coffee.

— ▽ —

THE FINEST CLASS

OF EVERYDAY LUXURIES.

— △ —
PALATIAL 3.5 BED
RESIDENCES & PENTHOUSES
WITH GRAND SUNDECKS

Representational Image



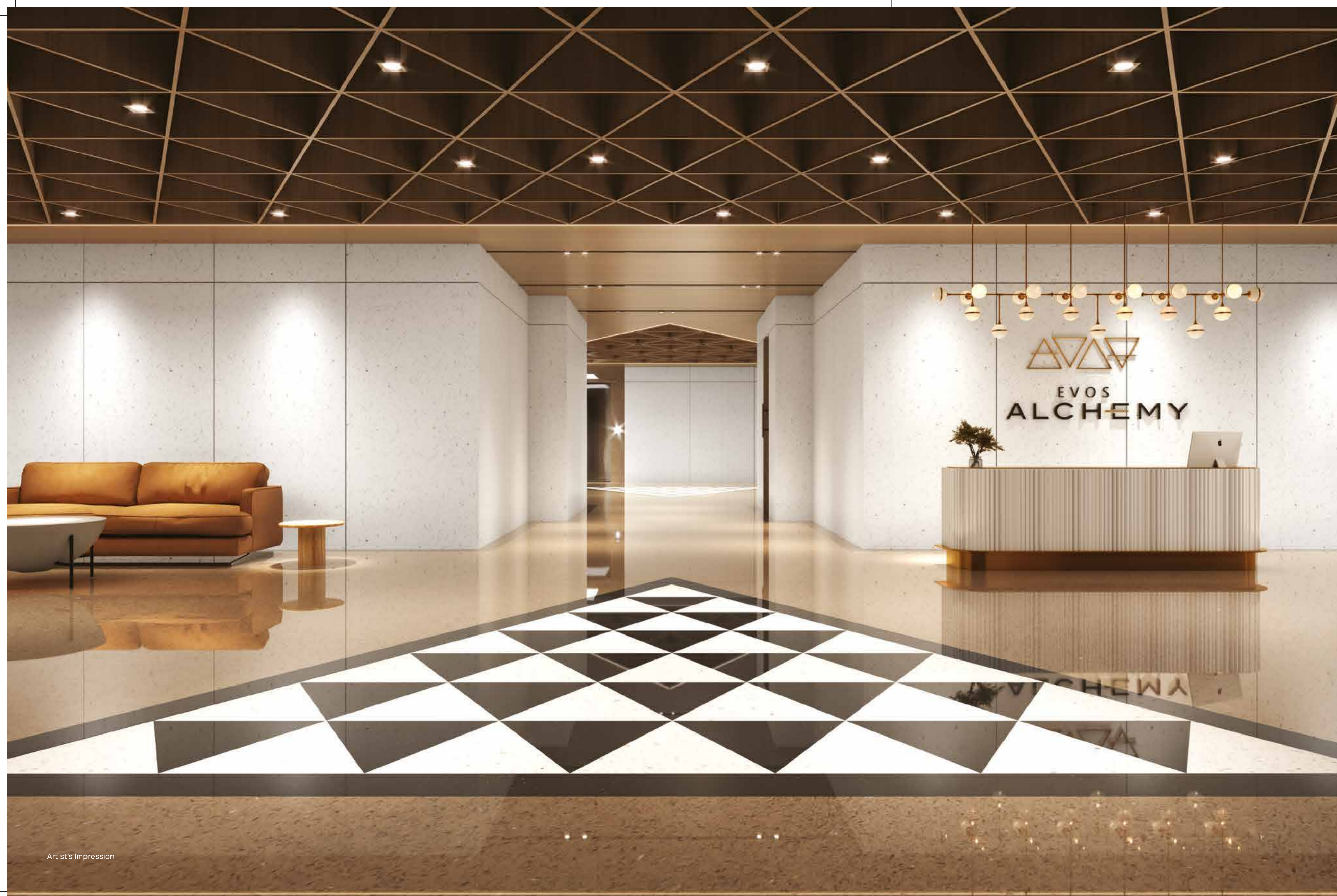
Artist's Impression



MAJESTIC GATE

Witness an aura of
grandeur at first glance.





— △ —

**OPULENT
DESIGNER
LOBBY**

Arrive like royalty
amidst sheer extravagance.

— ▽ —



Artist's Impression

— △ —
**THE
ROUNDAABOUT**

Drive your way to
a distinguished arrival.



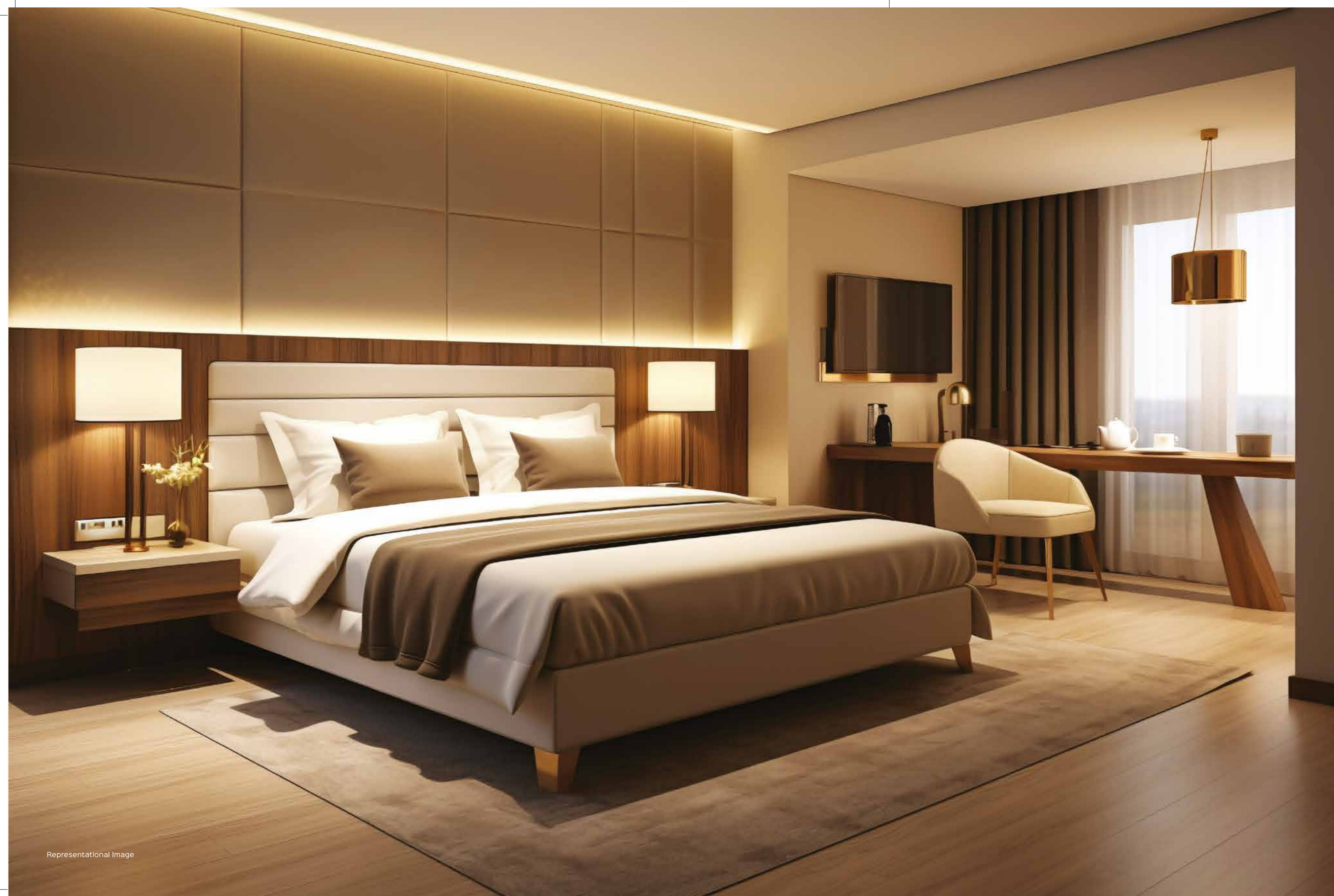


Representational Image

— △ —
**EXPANSIVE
LIVING ROOM**

Embrace a timeless life with
an abundance of space.





— △ —

ELEGANT BEDROOMS

Bedrooms that blend
comfort and privacy.

— ▽ —



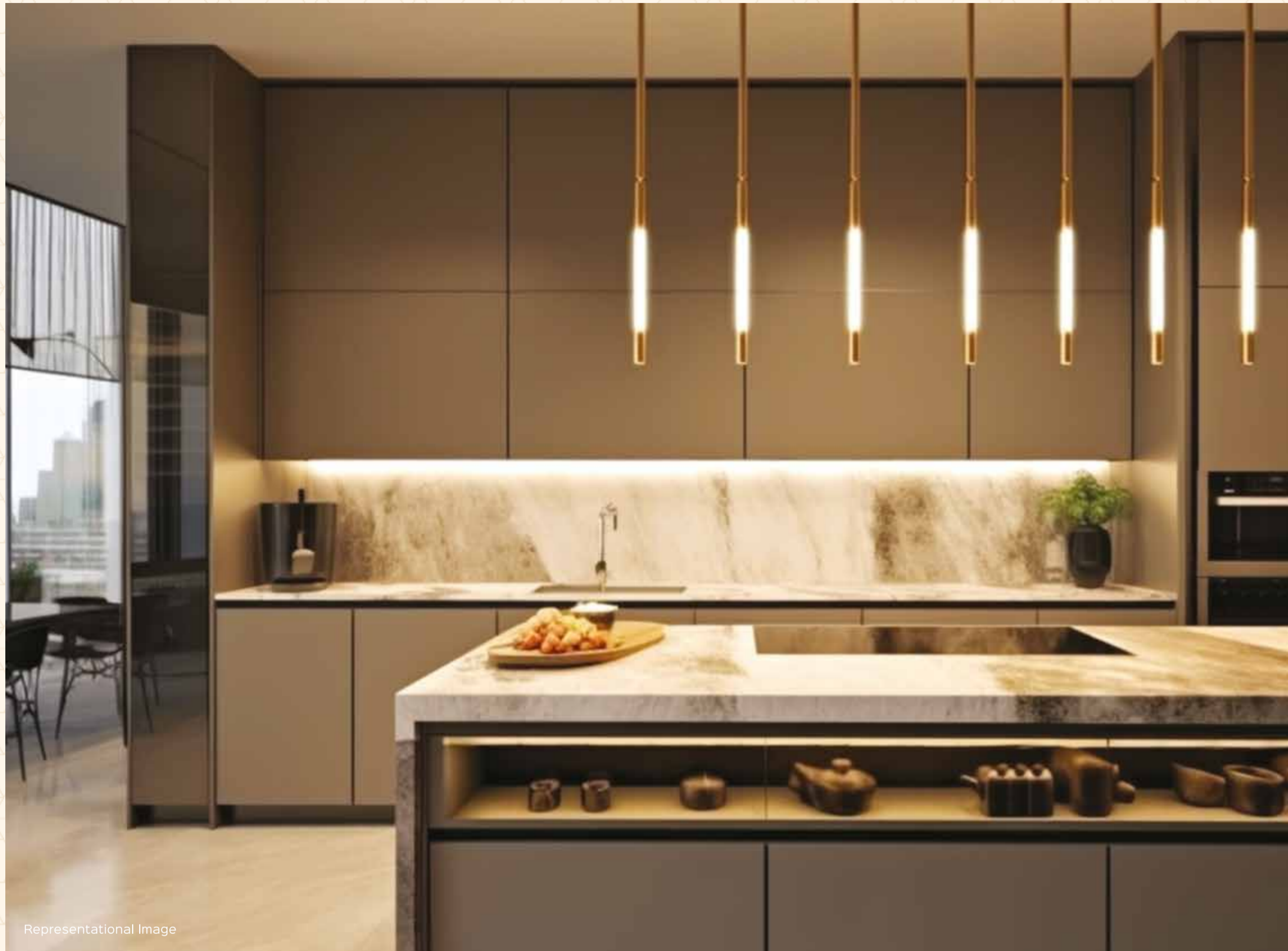
Representational Image



SUN DECKS

Be enchanted by the
magic of scenic glory.





Representational Image

MODULAR KITCHEN



Inspire yourself to create culinary excellence.



Representational Image

BATHROOM



Wash away your stress with the finest fittings.

THE GRANDEST CLASS

OF SIGNATURE EXPERIENCES.



GROUND & CLOUD LEVEL PODIUM
SPREAD OVER 2 LAC SQ.FT.





LIVE THE
**WORLD CLASS
PLANNING**

- | | |
|----------------------|------------------------------|
| 1. LIFESTYLE POOL | 10. QUIET NOOK |
| 2. YOGA DECK | 11. AMPHITHEATRE |
| 3. MEDITATION COURT | 12. MULTI-PURPOSE HALL |
| 4. WELL BEING POOL | 13. KIDS PLAY AREA |
| 5. KIDS PLAY AREA | 14. OPEN TO SKY PARKING AREA |
| 6. AMPHITHEATRE | 15. FLOATING CABANAS |
| 7. PARTY LAWN | 16. PRIVATE TERRACE |
| 8. SOCIAL PAVILION | 17. WELL BEING GARDEN |
| 9. CONNECTING BRIDGE | |

2 LEVEL LANDSCAPED PODIUM DECK.

Indulge in world-class living at the podium level, where every amenity is meticulously crafted to provide an active lifestyle experience. From a choice of azure pools to sporting avenues, embrace a life of fitness and leisure.

- WELL-BEING POOL
- YOGA DECK
- SOCIAL PAVILION
- CHESS COURT
- BOULEVARD BRIDGE
- WELL-BEING GARDEN
- LIFESTYLE POOL
- FLOATING CABANAS
- THERAPY POOL
- POOL TERRACE
- INDIVIDUAL TERRACE
- EXERCISE COURT
- QUIET LAWN
- MEDITATION COURT

ARTH



Artist's Impression

— △ —
**THE SPIRAL BRIDGE
CONNECTING GROUND
AND CLOUD**

Enjoy amenities
spread across two levels.

— ▽ —



Artist's Impression

— △ —
**SOCIAL PAVILION
WITH
MULTIPURPOSE HALL**

Experience a vibrant community
as you foster friendships.

— ▽ —



Artist's Impression

— △ —
**THE YOGA &
MEDITATION
DECK**

Discover the true meaning
of inner peace.



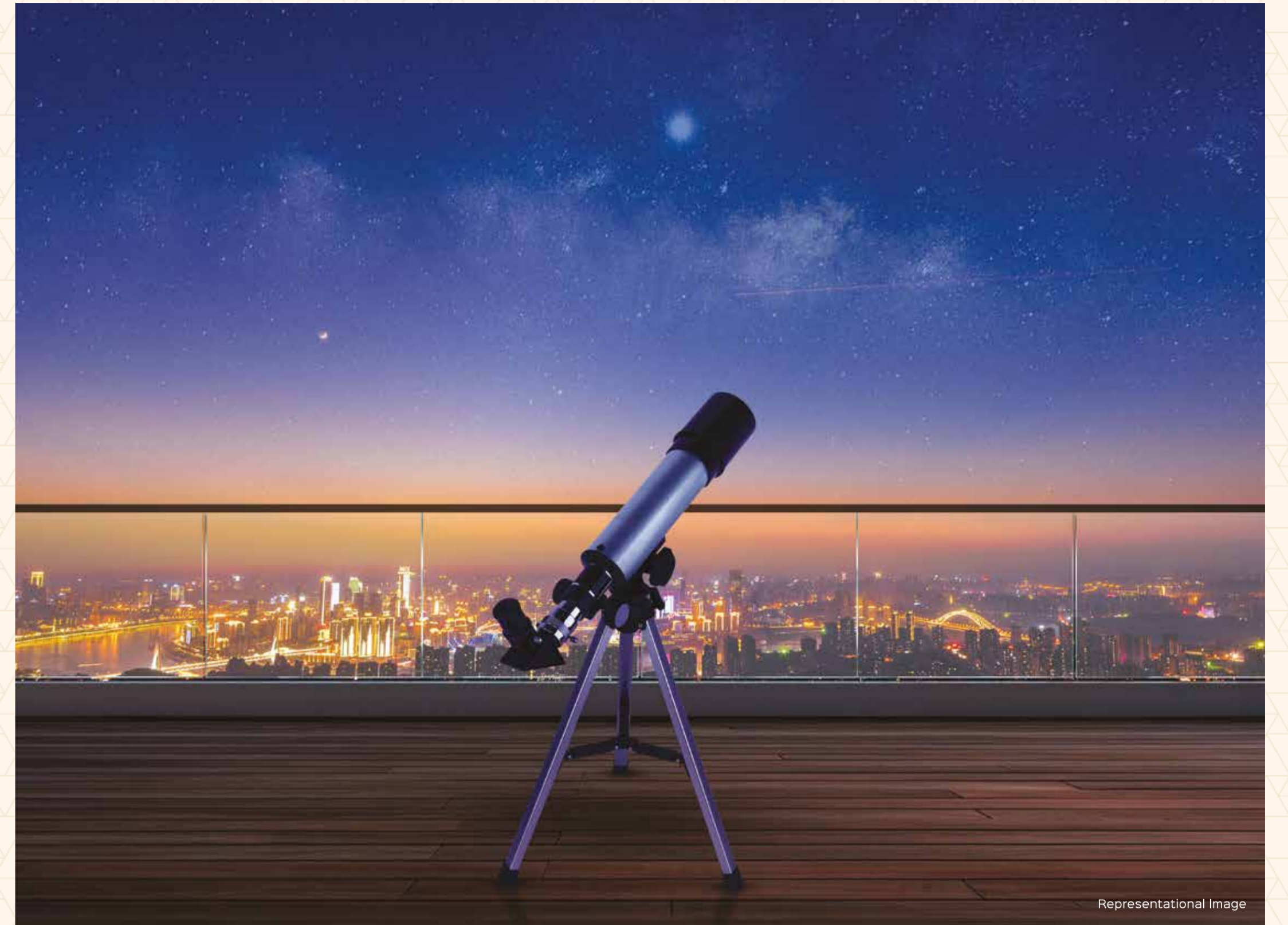


Representational Image

EXERCISE COURT



Stay on top of your fitness game.

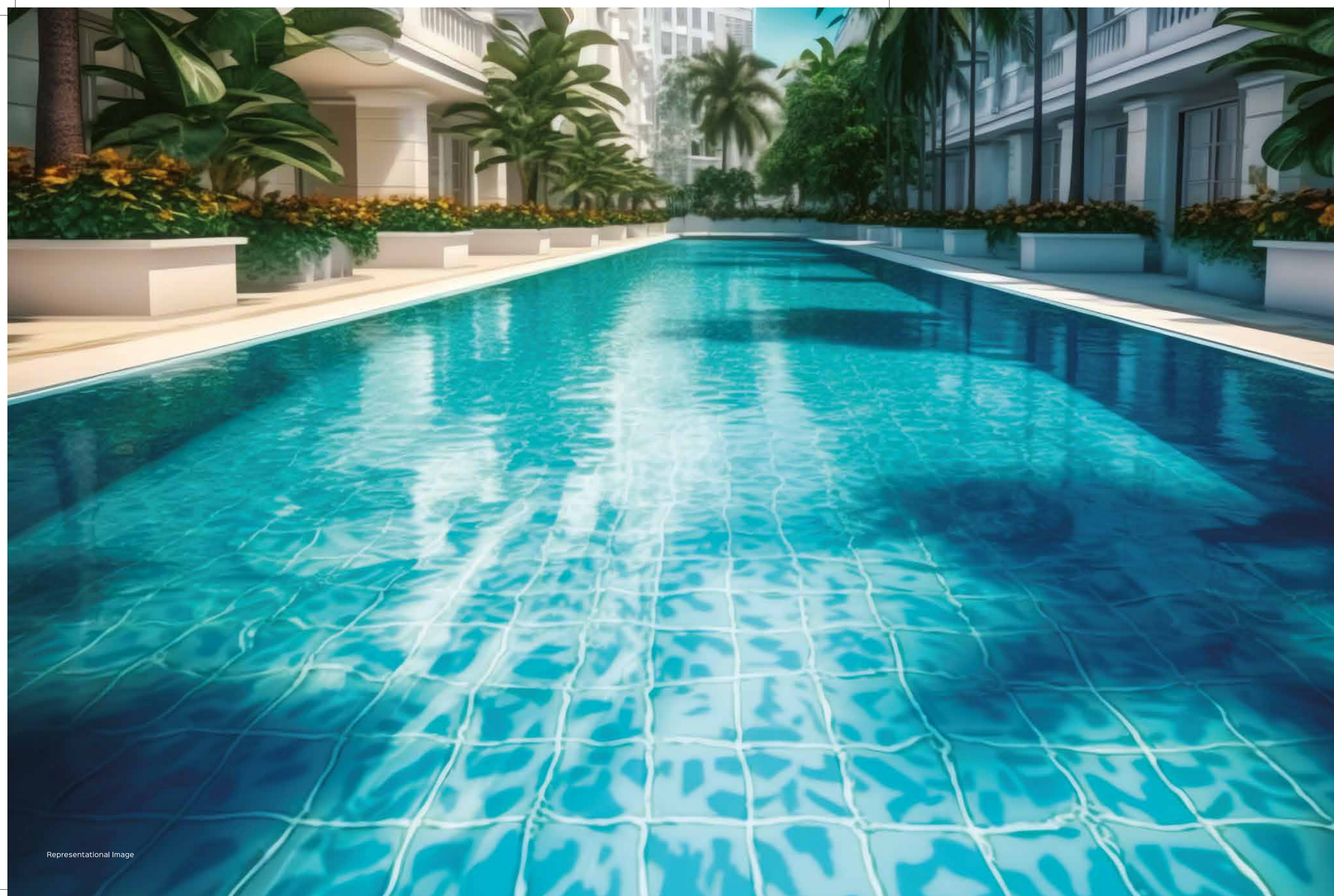


Representational Image

OBSERVATION DECK



Lose yourself in the enchanting world of stars.



— △ —

**THE
WELL-BEING
POOL**

Dive into the blue world of
health and wellness.

— ▽ —



— △ —

THE LIFESTYLE POOL

Immerse your senses
in azure bliss.

— ▽ —



FLOATING CABANAS



Indulge in pleasurable conversations as you rest comfortably.



JACUZZI



Let waves of relaxation flow through your being.



Artist's Impression



KIDS PLAY AREA

Watch your kids unwind
amidst giggles and games.





Artist's Impression



THE PLAYGROUND

Let your kids indulge
in a fun-filled experience.



THE MEZZANINE CLOUD DECK.

The cloud level will take indulgence to the next level with immersive lifestyle experiences. With a state-of-the-art fitness centre, a spa retreat, lounges and open decks, this is where elevated living will unfold at its finest.

- CLOUD WALKWAY
- FITNESS CENTRE
- THEATRE
- INDOOR PLAY AREA
- KIDS PLAY ROOM
- LIBRARY
- CO-WORKING SPACE
- SKY LOUNGE
- SPA AND SAUNA
- CAFÉ / LOUNGE

The logo for 'AER' is rendered in a dark, bold, sans-serif font. The letters are set against a background of a bright, glowing orange and yellow light that appears to be breaking through a dark, textured surface, creating a dramatic, ethereal effect. The light source is positioned behind the letters, causing them to glow and casting a soft shadow on the surface below. The overall aesthetic is modern and sophisticated, with a focus on light and shadow.



Artist's Impression



FITNESS CENTRE

Do that extra repetition for
a rush of endorphins.





Artist's Impression

— △ —
**NURSERY/
KIDS PLAY ROOM**

Let your children enjoy
learning new concepts.





Representational Image

THE SKY LOUNGE



Unwind in the warm company of clouds.



Representational Image

CLOUD WALKWAY



Take the first step towards tranquility.



Artist's Impression



LIBRARY

Stay immersed in the
world of literature.





Artist's Impression

— △ —

CO-WORKING SPACES

Prioritise professional commitments with ease.

— ▽ —



MINI THEATRE



Dive deep into the enchanting realm of cinema.



CAFÉ LOUNGE



Relish culinary brilliance while having a rendezvous.



— △ —

INDOOR GAMES ROOM

Test your gaming skills
in a friendly duel.

— ▽ —



Representational Image

SPA ROOM



Rejuvenate your being in a relaxing ambience.



Representational Image

SAUNA ROOM



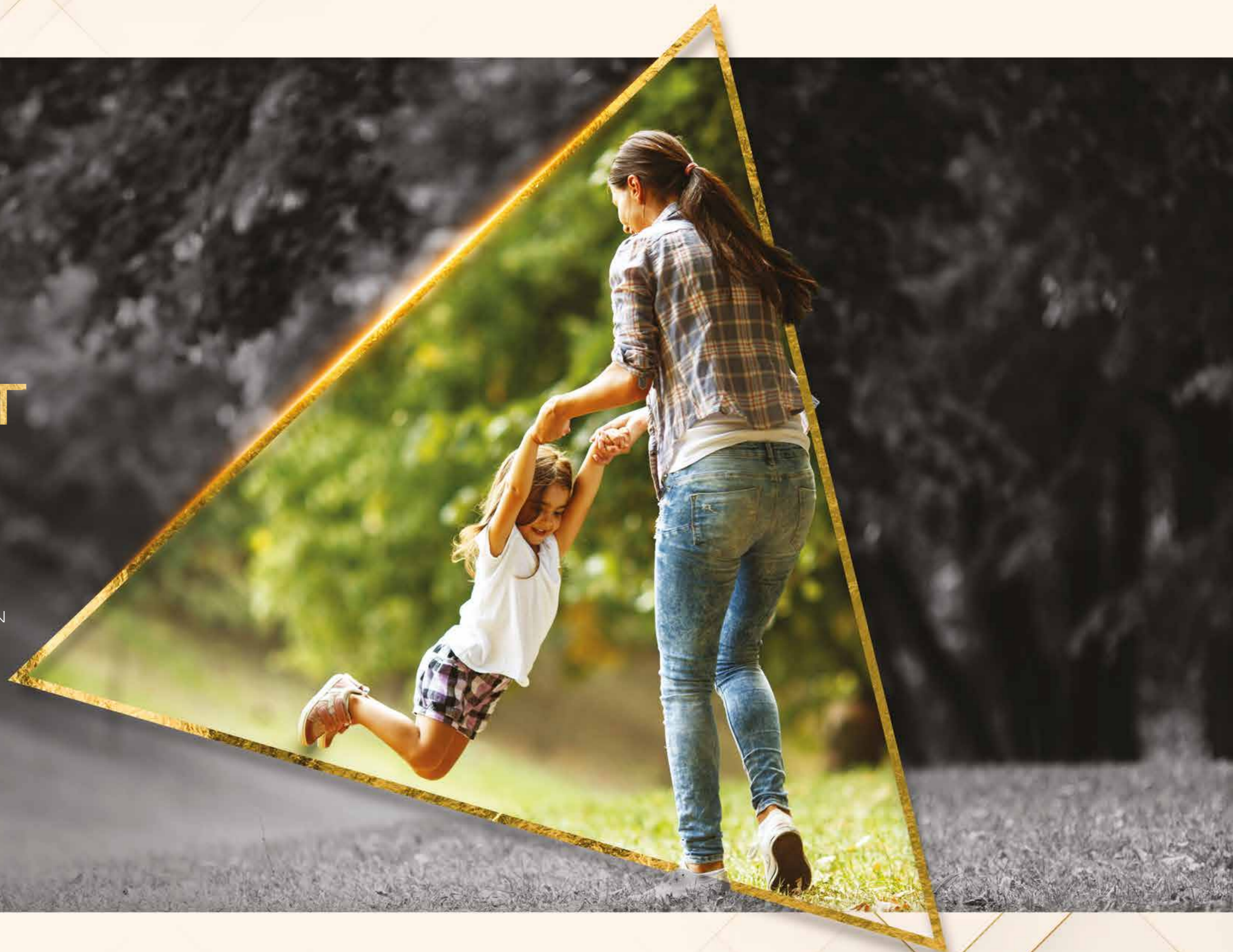
Retreat to a warm sanctuary of wellness.

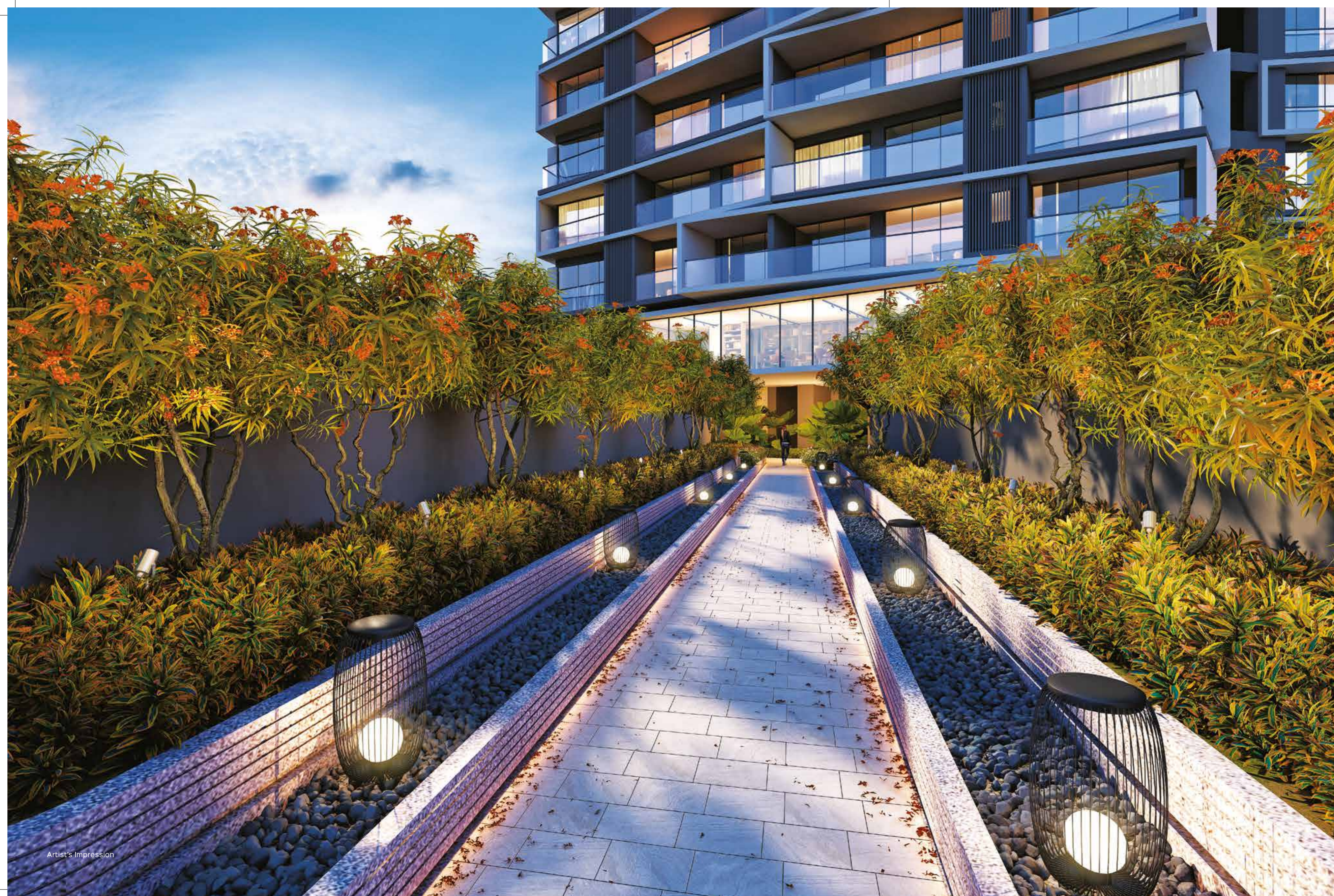
THE GREENEST CLASS

OF WELL-BEING.



6.9 ACRE ESTATE WITH MORE THAN
70% OPEN SPACES BY
LANDSCAPE TECTONIX, THAILAND





Artist's Impression

— △ —
**BOULEVARD
BRIDGE**
Spend leisurely mornings
walking towards peace.





Representational Image

— △ —
**OPEN LAWN &
WELL-BEING GARDEN**

Discover a sense of inner
calmness amidst greenery.

— ▽ —



THE CONNECTED CLASS

WITH MULTIPLE ADVANTAGES.



FINEST LIFESTYLE MEETS
FINEST LOCATION.

PATIA. THE CHOICEST LOCATION.



- FUTURE METRO STATION – 1 MIN
- RESTAURANTS AND FINE DINES – 5 MIN
- NANDANKANAN ZOOLOGICAL PARK – 6 MIN
- PREMIUM EDUCATIONAL INSTITUTIONS – 8 MIN
- WORLD CLASS HEALTHCARE – 10 MIN
- IT HUB (INFOCITY / SEZ) – 12 MIN
- PREMIUM SPORTS CLUBS – 12 MIN
- CENTRE OF THE CITY – 20 MIN

- SCHOOLS & COLLEGES
- HOSPITALS
- AIRPORT AND RAILWAY
- OFFICES
- LOUNGE AND DINING
- HOTELS
- PARKS
- ROADS / HIGHWAY
- ROADS / HIGHWAY







THE ALCHEMISTS

OF ODISHA'S
GOLDEN TOMORROW.



DESIGNED BY

THE WORLD RENOWNED ARCHITECT
SANJAY PURI.



Renowned architect Sanjay Puri is celebrated for his innovative designs that seamlessly blend tradition with modernity. His landmark creations showcase his distinctive approach to architecture, emphasizing harmony, sustainability and a unique cultural narrative.

“Creating spaces that engage people holistically and foster social interaction, evolving spatial relationships that are contextually responsive, forms the essence of our design philosophy.”

– Sanjay Puri



LANDSCAPED BY

SPECIALISTS IN CRAFTING TIMELESS SPACES
LANDSCAPE TECTONIX, THAILAND.



A consulting firm specialised in landscape architecture, master planning and urban design, Landscape Tectonix has been transforming landscapes through creative solutions, resulting in dynamic spaces that are seamlessly integrated and memorable. Carefully and thoughtfully synthesising its unique knowledge, talent and vision with the aspirations of each project, Landscape Tectonix crafts timeless spaces that captivate and inspire.



MADE BY

EVOS BUILDCON - SPREADING LOVE THROUGH WORLD-CLASS PROJECTS.

Evos Buildcon Pvt. Ltd. is Odisha's premier developer and a name associated with high quality real estate. Evos, to its credit, has the distinction of creating and developing high-end luxurious residential real estate projects and duplex properties across major cities in Odisha including Bhubaneswar & Puri.

MISSION

By 31st March, 2027, Evos Buildcon will become the most reliable company in Odisha by creating 5000 happy customers and thereby making a net worth of ₹1000 Cr.

CORE PURPOSE

To bring meaningful transformation in the world by enhancing the quality of life in such a way that it makes the world a better and beautiful place to live and to grow.

“As one of the most progressive and pioneering real estate brands of Odisha, we at EVOS have resolved to create Lovemarks. A home that is a creation from the heart, an outpouring of passion for the finest that life has to ever offer. A livespace that brings together the best of the best, curated by the celebrated. At EVOS a home is where the heart is. And the heart is where a lovemark is. So if you're thinking of a home in Odisha, think no further than an EVOS Lovemark.”

- Kalinga Keshari Rath

17+
YEARS LEGACY

800+
HAPPY FAMILIES

20+
COMPLETED PROJECTS

APARTMENT SPECIFICATION

STRUCTURE

Foundation	Pile Foundation with Pile cap & Basement Raft
Super-structure	RCC Framed structure
Walls	RCC frame structure with all external including structural & nonstructural wall will be Aluform RCC wall of a thickness of 8". All internal non structural wall will be AAC block work.

FINISHING

Living & Dining	Floor & Skirting - Vitrified Tile/GVT - 1600 x 800 / 1200 x 1200 mm with spacers
Balcony	Floor - GVT planks Railing - SS Railing with Toughened Glass Wall - External Wall Finished with Textured Paint & plain painted surface Ceiling - Putty with Emulsion Paint Provision for Light and Fan points.
Kitchen	Floor - GVT - 1600 x 800 / 1200 x 1200 mm Counter - Granite / Similar Stone to fit / accommodate modular Kitchen Dado - GVT - 600 x 600 mm till 600 mm height over kitchen counter Sink - SS 304 Single bowl with drain board Sink & Sink mixture with solar water connection Provision for Chimney / Exhaust
Utility / Dry Balcony	Floor - GVT - 600 x 600 mm Glazed Ceramic tiles - 300 x 600 mm up to 1200 mm from floor Railing - MS Railing with enamel paint finish Wall - As per External Wall Finish w/o Textured Paint Ceiling - Putty with Emulsion Paint Provision for Washing machine
Bedrooms	Floor & Skirting - GVT - 1600 x 800 / 1200 x 1200 mm
Toilets	Floor - Anti skid Tile - 600 x 600 mm Dado - Glazed Ceramic tiles - 600 x 600 mm Dado - Glazed Ceramic tiles - 600 x 1200 mm Wash Basin Counter - Engineered Stone - 15 mm thick CP & Sanitary - CP Fittings and Sanitary ware of premium brands along with Provision for Geyser and Exhaust. Shower Partition - made up of SS Sections + Toughened Glass
Doors	Main Door - Polished Veneer Finish Solid Core Factory made doors with WPC door frame, architrave & Smart digital lock Internal Door - Painted / Laminated factory made pre-engineered doors with matching door frame and architrave Hardware - Stainless steel (SS304) hardware of reputed brand

Windows	Aluminium Powder coated sliding doors & windows with glass / openable ventilators All window Sill and jamb with granite / engineered stone cladding
AC Ledge	MS Railing with enamel paint finish
Internal Wall & Ceiling	Gypsum Putty finished walls with one coat of primer & two coat of Acrylic emulsion Paint
Electrical	Conduiting - FRLS wires with PVC conduits of reputed brand Premium quality Modular Switches, Socket & Switch gears Provision for AC in all rooms including Living / Dining Provisions for TV points in all Bedrooms and Living Rooms
Other Facilities	Intercom, provision for Internet connection

COMMON AREA SPECIFICATION

Reception Lobby	Air-conditioned with imported stone / Indian granite flooring
Common Lift Lobby	Full Body Vitrified Tile - 600 x 1200 mm with spacers
Wall Cladding Lift Facia	Granite / Full Body Vitrified Tile - 600 x 1200 mm
Ceiling	False ceiling with LED lights in all corridors
Staircase	Tread - Granite Finish - 16 mm thick, Riser - Full Body Vitrified Tile 600 x 1200 mm Railing - MS Railing with enamel paint finish
External Wall	Finished with weather coat paint complimenting to elevational intent in combination of Textured Paint & plain painted surface
Fire Doors	Fire resistant doors as per fire standard specification
Elevators	Passenger elevators along with Stretcher elevator of reputed brand
CCTV	Provision of CCTV in Main Entrance Lobbies & all entry ways for security & surveillance
Intercom	Intercom to all DU's & common facility areas
External Driveway	Well-paved driveway with concrete pavers
Covered Parking & Driveway	Vacuum dewatered flooring
Common Area Lighting	Energy efficient LED lighting system proposed in most areas
Fire Fighting Network	As per NBC/Fire Safety Recommendation

