

The background features a series of overlapping, wavy bands of color. The top portion is a light, warm orange, which transitions into a medium teal, and finally into a darker, deep teal at the bottom. The transitions between these colors are soft and painterly, with visible brushstroke-like textures. A thin, gold-colored rectangular border frames the entire composition.

*Larger than life
Living*

SWATI PARKSIDE

3 & 4 BHK SPACIOUS APARTMENTS IN
APPLEWOODS AT SHELA, AHMEDABAD

18.00 MT. WIDE ROAD

N
SITE PLAN



TOWNSHIP GARDEN

GARDEN & CLUB HOUSE

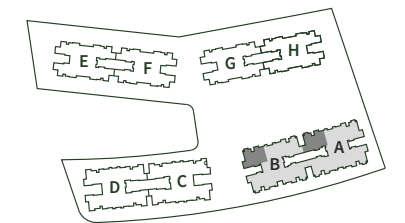
18.00 MT. WIDE ROAD

ENTRY

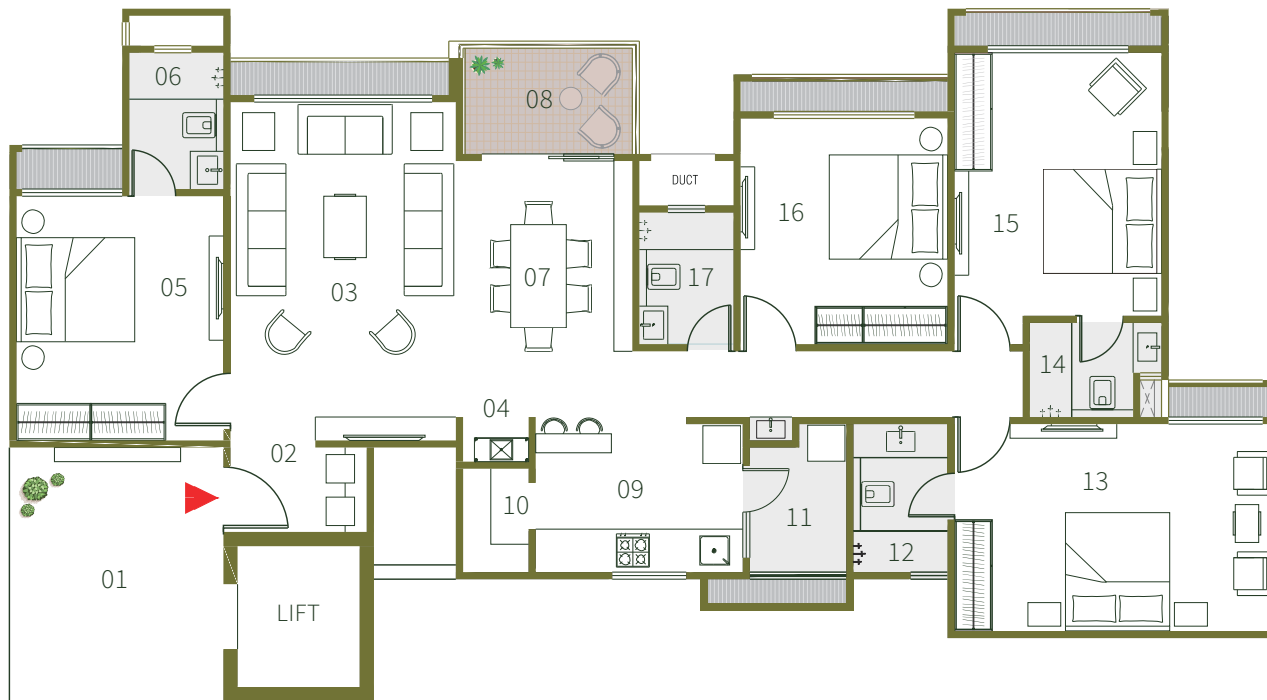
EXIT



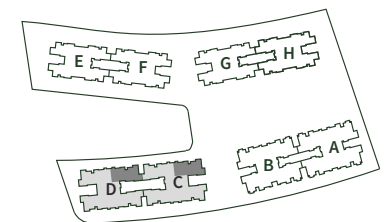
01 Personal Foyer	10'2" X 14'
02 Vestibule	7'3" X 5'4"
03 Living Room	13' X 20'
04 Pooja Room	4' X 2' 4"
05 Bedroom 01	11' X 13'
06 Toilet	5' X 7'
07 Dining	10' X 15'4"
08 Balcony 01	10'9" X 10'
09 Kitchen	12' X 9'9"
10 Store Room	4' X 7'
11 Wash Room	5'6" X 7'9"
12 Toilet	5'6" X 4'3"
13 Bedroom 02	18'4" X 12'
14 Dress & Toilet	6'1" X 10'
15 Bedroom 03	11' X 16'4"
16 Toilet	7'6" X 5'
17 Balcony 02	8'9" X 4'7"
18 Bedroom 04	12' X 11'
19 Toilet	5' X 7'



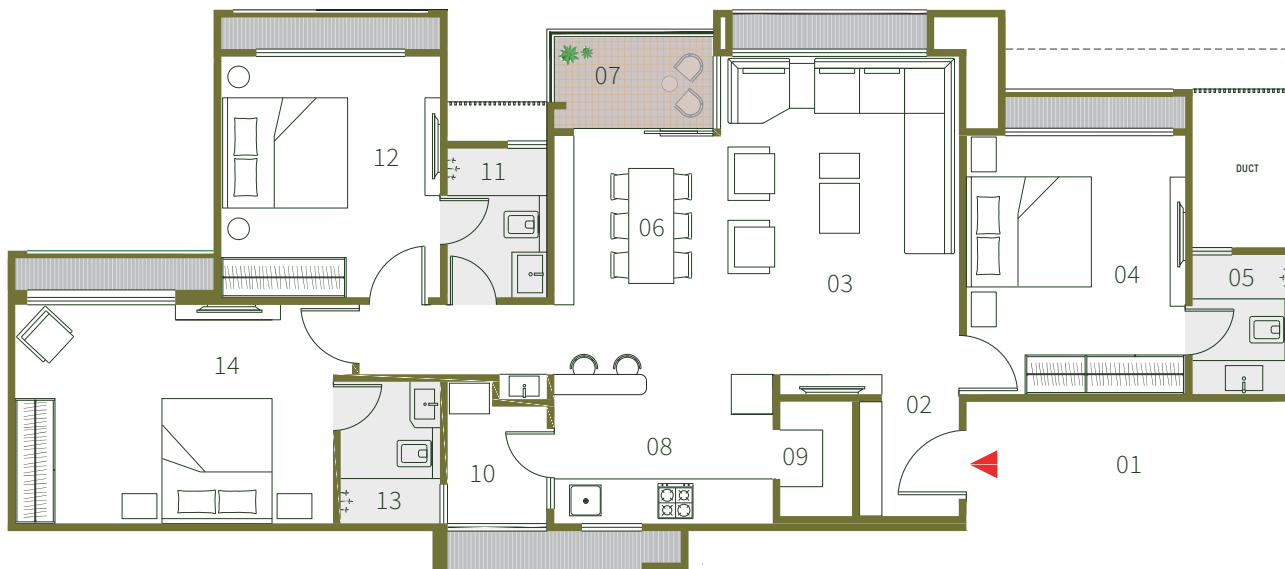
N
 4BHK (BIG) - Blocks - A & B
 Typical Unit (1st Floor Onwards)



01 Personal Foyer	11' 2" X 13' 6"
02 Vestibule	7' 3" X 4' 6"
03 Living Room	12' X 18'
04 Pooja Room	3' 6" X 2' 4"
05 Bedroom 01	11' X 13'
06 Toilet	5' X 7' 3"
07 Dining Room	9' 4" X 13' 7"
08 Balcony	9' 4" X 6'
09 Kitchen	11' X 8' 3"
10 Store	3' 6" X 5' 6"
11 Wash	5' 1" X 7' 10"
12 Toilet	5' X 7' 10"
13 Bedroom 02	17' X 11'
14 Toilet	7' X 5'
15 Bedroom 03	11' X 14'
16 Bedroom 04	11' X 12'
17 Toilet	5' X 7'



N
 4BHK (Standard) Blocks - C & D
 Typical Unit (1st Floor Onwards)



01 Personal Foyer	16' 7" X 6' 6"
02 Vestibule	5' X 5' 9"
03 Living room	12' X 17'
04 Bedroom 01	11' X 13'
05 Toilet	5' X 7'
06 Dining	8' 4" X 12'
07 Balcony	8' 4" X 5'
08 Kitchen	11' X 7' 6"
09 Store	3' 7" X 5' 9"
10 Wash	5' X 7' 6"
11 Toilet	5' X 7' 6"
12 Bedroom 02	11' X 12' 1"
13 Toilet	5' X 7' 1"
14 Bedroom 03	16' X 11'

N
 3BHK Blocks - E, F, G & H
 Typical Unit (1st Floor Onwards)

Standard Specifications

FLOORING Living / Dining / Bedrooms	Vitrified Tiles
MASTER BEDROOM	Wooden Flooring
KITCHEN	Vitrified Tiles Granite Platform with S.S. Sink
BALCONY	Ceramic / Rustic Tiles
DOORS	Main Door. Natural Venner Polished. Others will be Flush Doors with Oil Paints.
WINDOWS	Sliding Aluminium Windows
TOILETS	Glazed / Ceramic Tiles up to Lintel Level Counter Basin / Wall Hung Basin. EWC Couple Closet CP Brass Fittings - JAGUAR or Equivalent
ELECTRIFICATION	Concealed Copper Wiring with Modular Switches MCB Distribution Panel
COLOUR	Internal: Putty Finish External: 100% Acrylic paint.

Salient Features

Well-designed Entrance Foyers.

Security Campus Under CCTV Surveillance.

Alloted Car Parking With Each Apartment.

DTH Satellite TV Connection

Complete EPABX Connection

Power Generator Backup For An Emergency Utility

House Built Around Large Courtyard Facilitating Activites For All Age Groups.

Wide Internal R.C.C. Roads With Internal Designed Stone Paving.

Ample Car Parking

Lush Green Environs With Beautiful Landscaping & Sit Outs.

Amenities Par Excellence



Gymnasium & Health Center



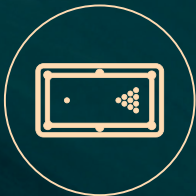
Toddler's Day Health Center



Banquet Hall with Kitchen



Basketball Court



Indoor Sports Complex



Library Hall



Swimming Pool & Splash Pool



Box Cricket



Children Play Area



Indoor Badminton Court



Well landscaped Garden



Yoga Deck



CLUB 07 ●

MICA ●

● SHANTI
ASIATIC
SCHOOL

● BOPAL

● SURBHIT
VATIKA

● AGRASEN
BHAVAN

● SKYCITY

● GOKULDHAM

● SOBO
CENTRE

● APPLEWOODS
TOWNSHIP

● BOPAL
444

SWATI
PARKSIDE

● SOUTH
BOPAL

● AMBLI

● EKLAVYA
SCHOOL

● DECATHLON

AMBLI - BOPAL

● KARNAVATI
CLUB

● ISKCON
TEMPLE

● YMCA

● ZYDUS

● AUDA
GARDEN

Well Connected Residences

05 minutes drive
to Sky City

09 minutes drive
to S G Highway

12 minutes drive
to Eklavya School

08 minutes drive
to South Bopal

10 minutes drive
to Karnavati Club

20 minutes drive
to Zydus Hospital

07 minutes drive
to Club 07

10 minutes drive to
Upcoming Taj Hotel

50 minutes drive
to Airport



| SWATIPROCON.COM

11 th Floor, Signature One, S.G.Highway, Divya Bhaskar Road, Ahmedabad, India.
gujrera.gujarat.gov.in / RAA06978