

# GSN RISE APARTMENT



## Specifications

### ▶ STRUCTURE

RCC Structure with Grade FE 550 quality steel and M25 Grade Concrete

### ▶ SUPER STRUCTURE

Brick masonry with red clay bricks in cement mortar, Outer wall- 9" thick, Inner wall- 6" thick

### ▶ PLASTERING

**EXTERNAL:** Double coat of sponge finish with water proof  
**INTERNAL:** Double coat of sponge finish

### ▶ DOORS

**MAIN DOORS:** Engineered wood/Teak Wood frame & Teak veneer/membrane skin shutters aesthetically designed and finished with polish, fixed with hardware of reputed make  
**INTERNAL DOORS:** Engineered wood/Teak Wood frame & factory made flush/moulded shutter, fixed with hardware of reputed make

**FRENCH DOORS:** UPVC door frame with glass paneled shutters with mosquito mesh

**WINDOWS:** UPVC door frame with glass paneled shutters with mosquito mesh Mild steel (MS) grills with enamel paint finish.

### ▶ PAINTING

**EXTERNAL:** Double coat of Apex Asian Paints

**INTERNAL:** Double coat of putty and acrylic Asian Paints Plastic Emulsions over coat of primer

### ▶ FLOORING AND WALL TILING

**ROOMS:** 800 X 800 vitrified tiles.

**BALCONIES:** Rustic ceramic tiles/anti-skid tiles.

### ▶ LIFT

Lift with V3f system for energy efficiency, ARD & OSG

### ▶ TOILET

**FLOORING:** Antiskid ceramic tiles of reputed brand with Epoxy

**WALL:** Glazed Ceramic tiles dado of quality make up to door Height

### ▶ UTILITY/WASH

**WALL:** Glazed Ceramic tiles dado upto 3' Height.

**FLOORING:** Rustic ceramic tiles of reputed brand

### ▶ KITCHEN

Glazed vitrified tiles, black granite platform, stainless steel sink

### ▶ ELECTRICAL

Concealed copper wiring, modular switches of Anchor Roma or Similar Make, power outlets, multiple plug points

### ▶ PLUMBING & SANITARY

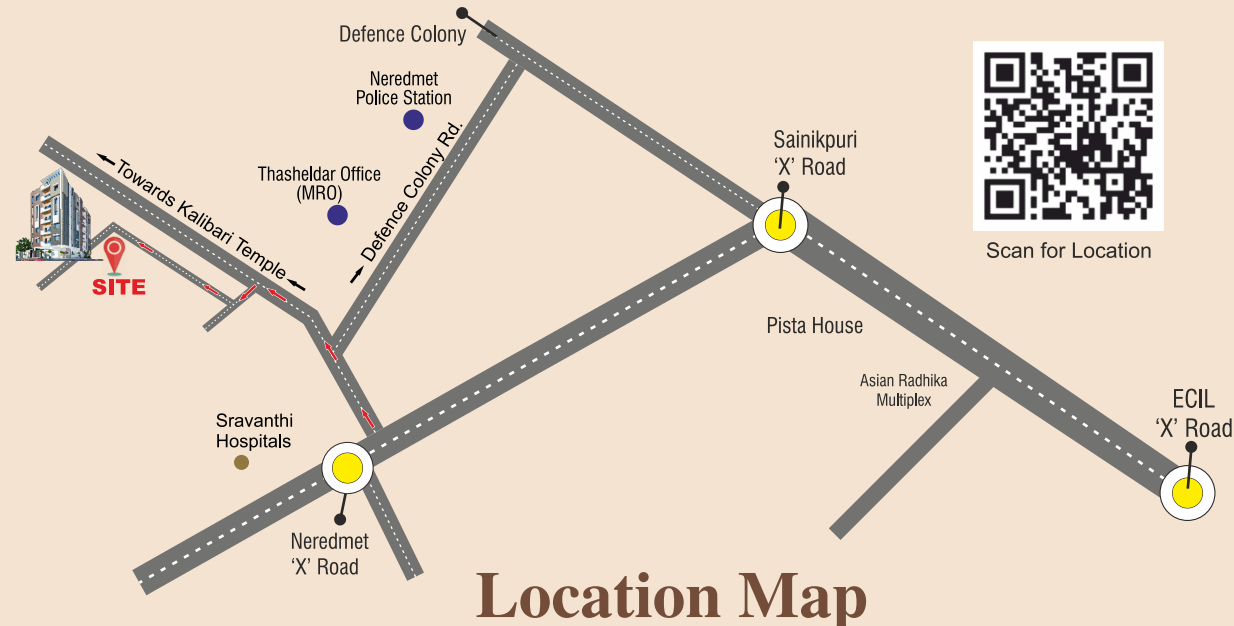
**Bathroom Fittings :** Jaguar or Similar Make, Ashirwad CPVC & ISI-marked PVC pipes, rain-water harvesting pit

### ▶ TELEPHONE/COMMUNICATION

CC Camers & provision for cable connection

### ▶ GENERATOR

D G set, backup for common areas & Flats



Note : This brochure is not a legal offering. All details specification, areas etc., mentioned herein are subject to change without notices.

  
**GSN INFRA**

Plot no 21-B, Bharani colony, R.K.Puram , Secunderabad

**Contact No.: 9951662612 / 9391007197**

# GSN RISE APARTMENT



Home  
Is Where  
Your Story  
Begins

Design By  
**NB GRAPHIX**  
DESIGNING & PRINTING  
© 9701797645

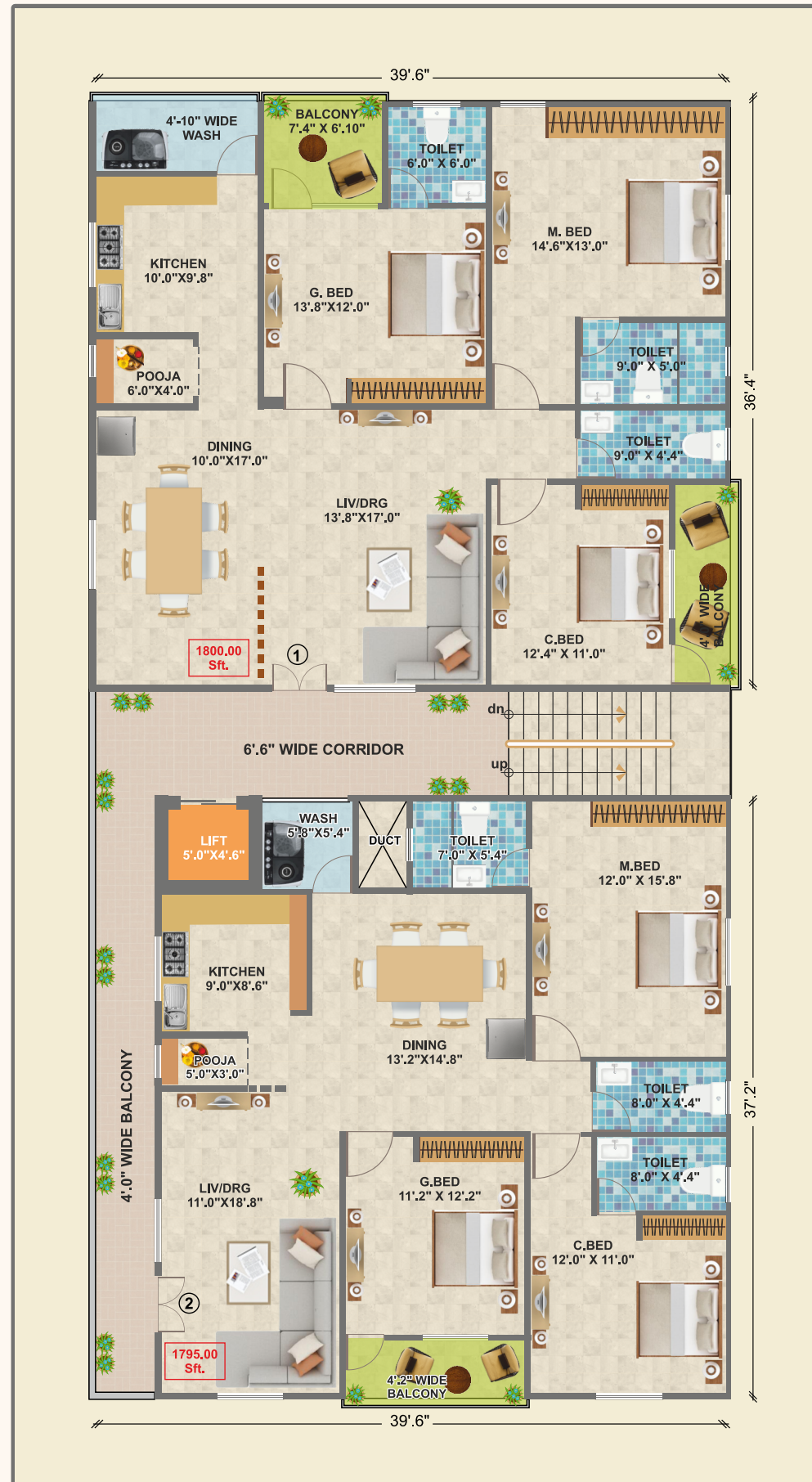
## Highlights

- Independent Flats with no common walls
- 3 Phase Electrical Connection to each Flat
- Provision for EV Charging in Parking
- As Per VASTU
- Ample Ground Water
- Prime Location Near Sri Bhavans Ramakrishna Vidyalaya School Back Gate
- Generator Backup for all Flats & Lift

**3 BHK  
Luxury Apartments**

@ Sainikpuri, Secunderabad.

# Typical Floor Plan



30'-0" WIDE ROAD

30'-0" WIDE ROAD



**GSN RISE**  
APARTMENT

Belongs To Mr Niranjan S E5

## About GSN RISE APARTMENT

A rapidly growing construction company in Secunderabad with 20 years of rich legacy in delivering modern superior quality homes. We are known for building homes using high quality materials only and have an excellent track record of delivering projects in time. Our each and every project is exclusive with a clear understanding of every need of the customer. The buildings are designed purely as per vastu principles without compromising on functional aspects.

