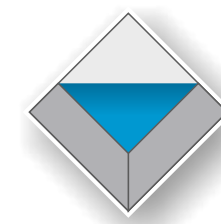


We at **Rajyash Group** strongly believe

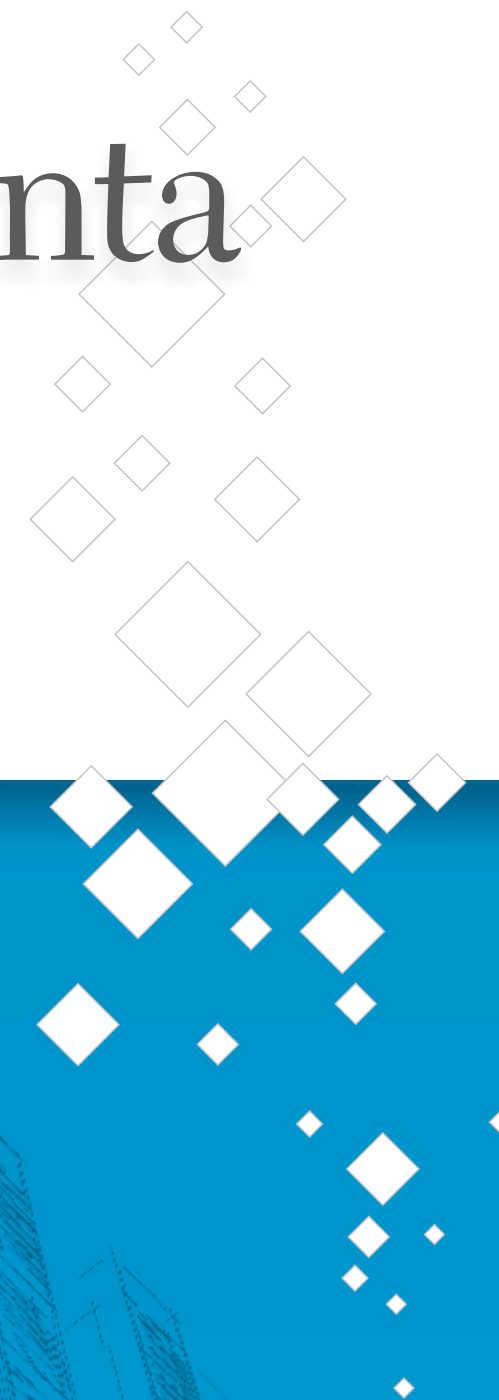
“If we take care of our transparency in our dealings and quality in our work, our reputation will take care of itself.”

And to carry forward our belief through all our work we have come up with brand new formula called **TQR** for buying dream properties

FORMULA **TQR** TRANSPARENT DEALING - **Q**UALITY - **R**EPUTATION



RAJYASH
Reevanta



2 BHK RIVERSIDE LIVING

GROUND FLOOR PLAN



AMENITIES

-  WELL PLANNED GARDEN
-  CHILDREN'S PLAY AREA
-  INTERCOM FACILITY
-  SPORTS CENTER
-  BADMINTON COURT
-  OPEN AIR THEATER
-  SENIOR CITIZEN SIT OUT
-  BUS PICK-UP ZONE
-  LOUNGE & LIBRARY WITH WI-FI FACILITY
-  ROUND THE CLOCK GATED SECURITY WITH C.C.T.V. CAMERAS
-  SKY LOUNGE
-  GRAND ENTRANCE FOYER
-  PERFORMING STAGE
-  AMPLE PARKING (GF & BASEMENT)

Reevanta



Unveiling the epitome of luxury budget homes.... **Rajyash Reevanta!** With this newest feather in our cap, Rajyash Reevanta is set to create benchmark in creating lifestyle homes and yet provide complete value for money for our customer.



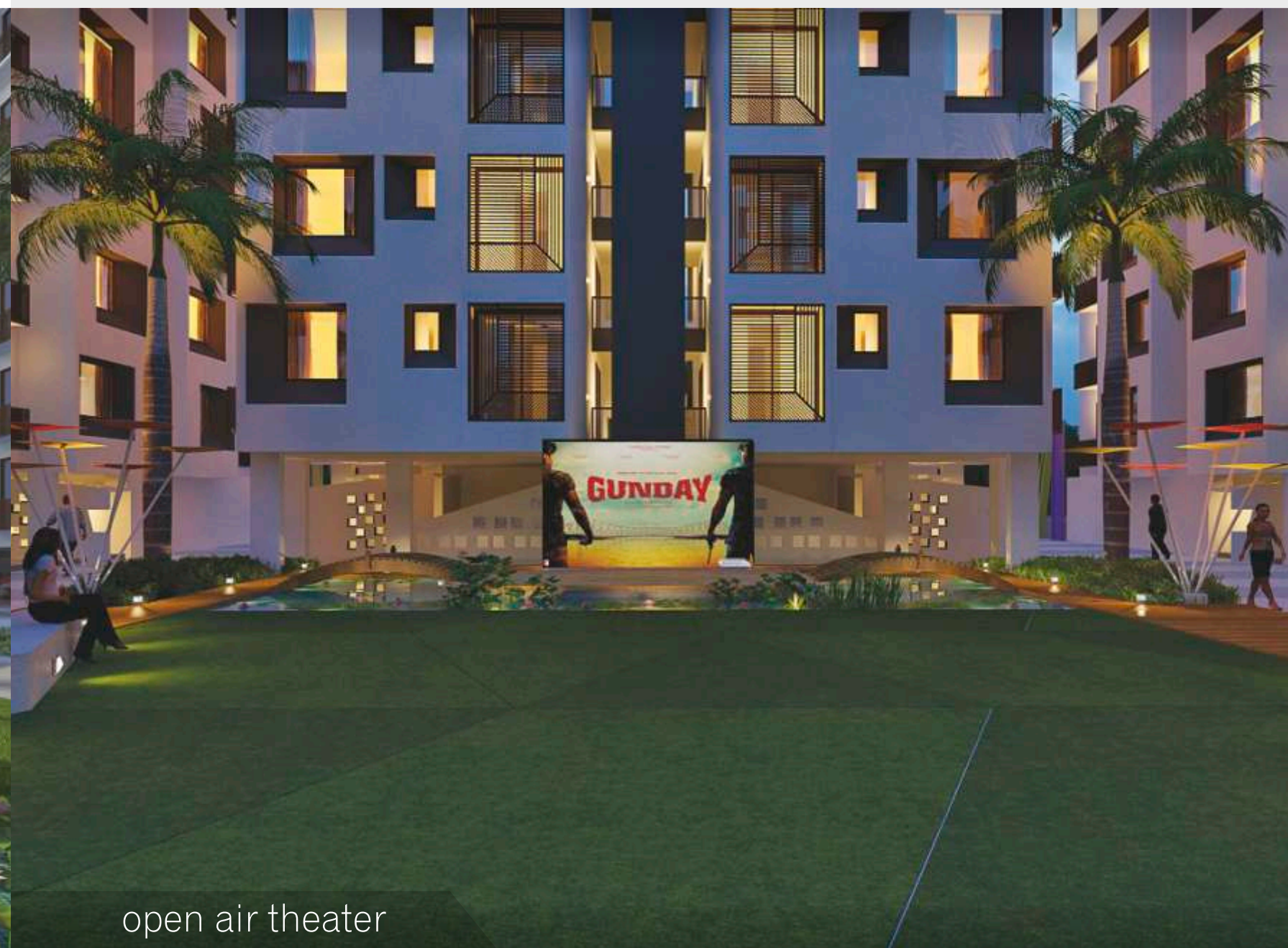
RAJYASH
Reevanta

Premium Living

Rajyash Reevanta will be a residential project offering premium living to its residents. All the apartments in the tower promise a view of its surroundings with excellent ventilation and spacious lifestyle, as well as access to A-grade facilities including a landscaped garden, children play area, gym, badminton, open air theater, sky lounge and many more. Rajyash Reevanta is set to shift your lifestyle to new heights.



well planned garden



open air theater



RAJYASH
Reevanta



top garden view

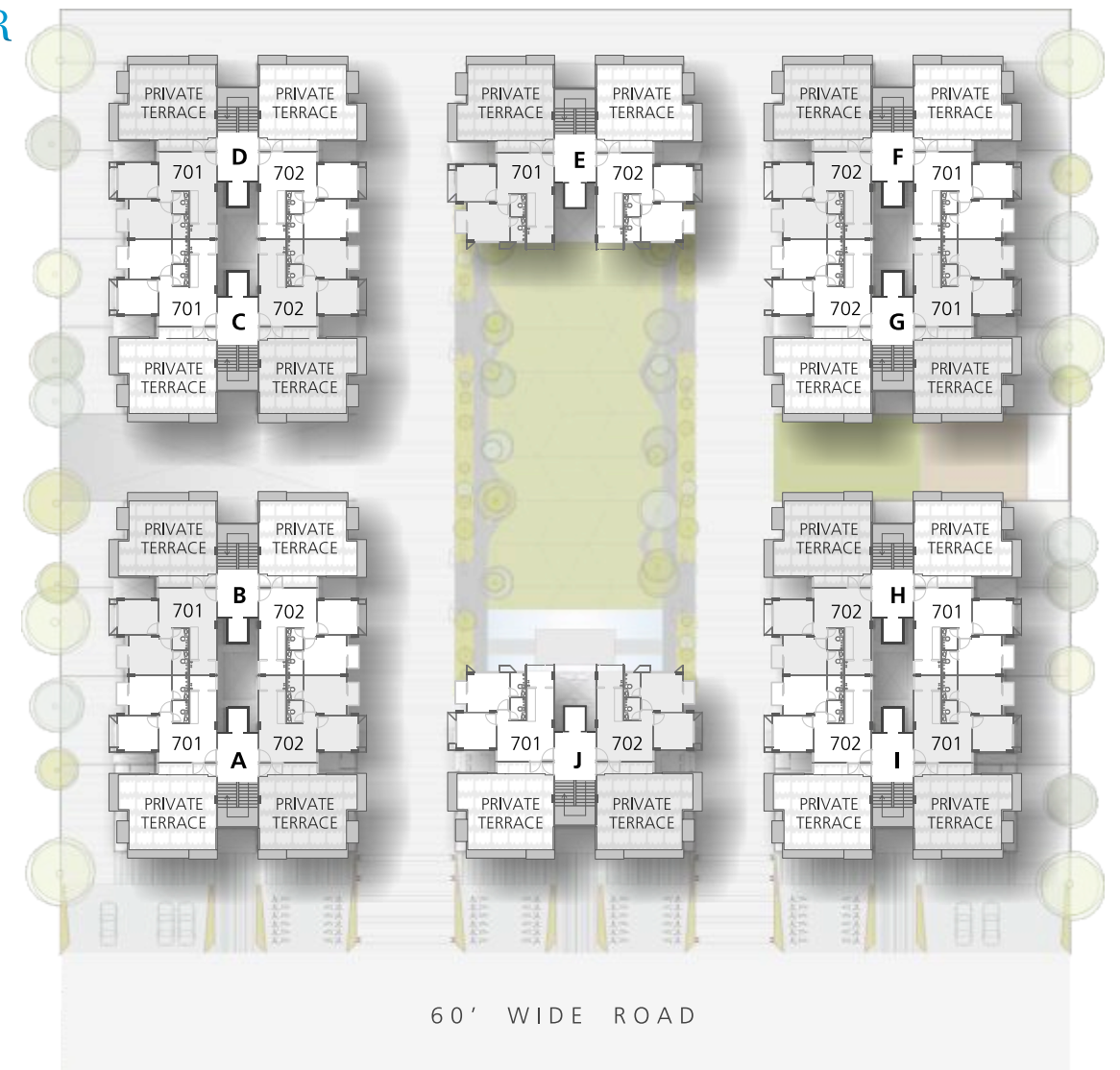


children play area



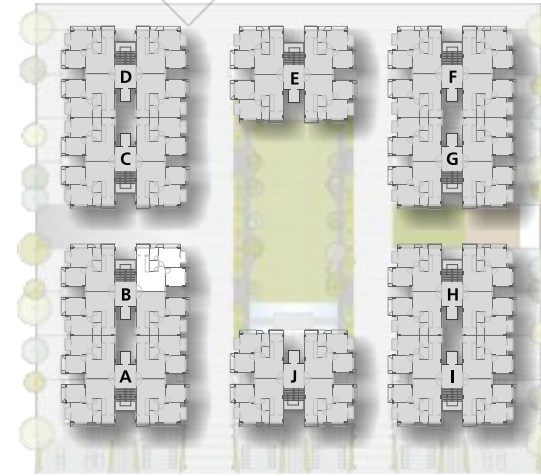
badminton court

TOP FLOOR PLAN



TERRACE PLAN





UNIT PLAN - 2 BHK

block A to J

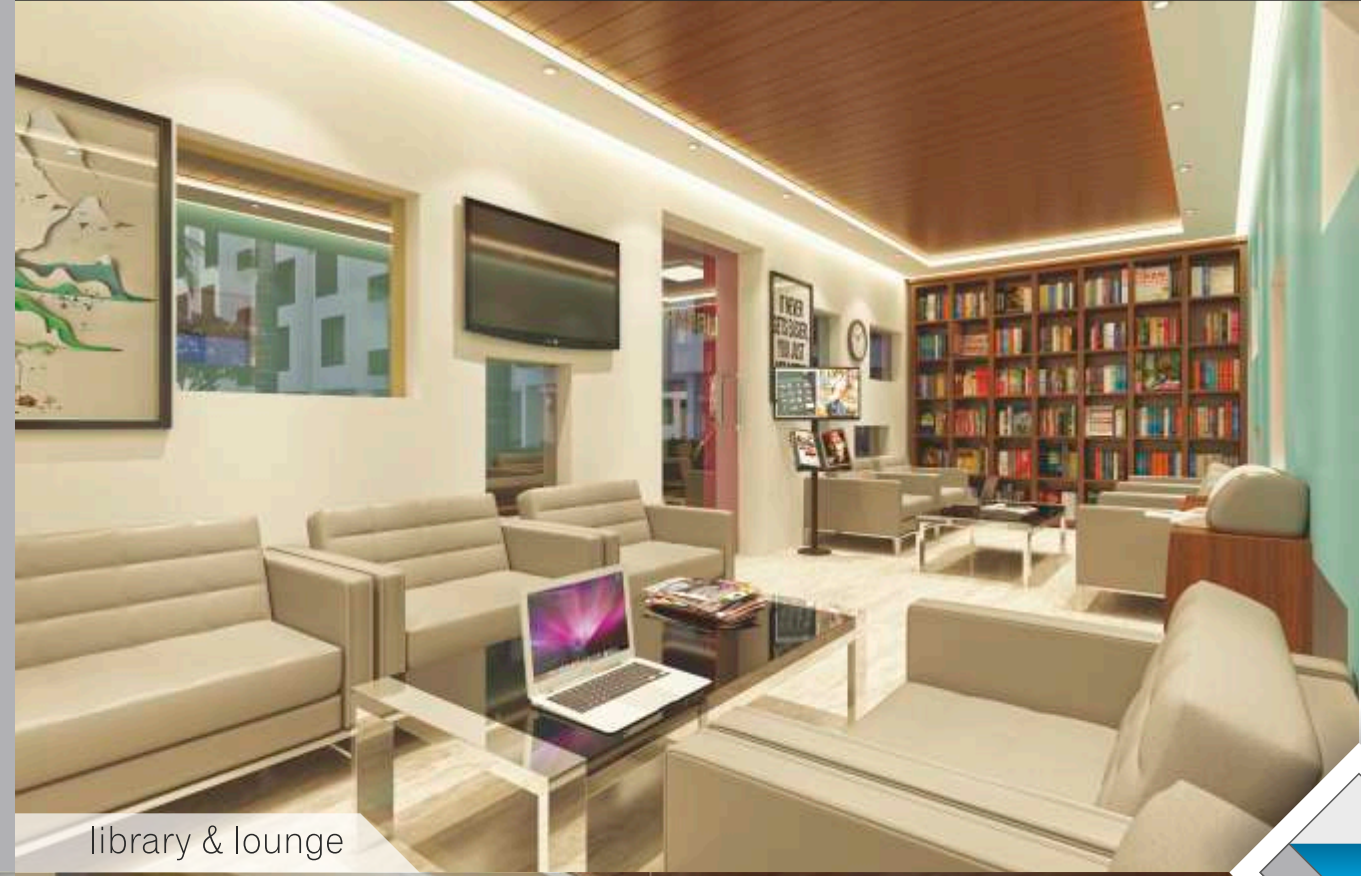
535 sq.ft.
(Carpet + Wall)
(480 sq.ft. + 55 sq.ft.)
(49.72 sq.mt.)

| No. | SPACES | AREA |
|-----|--------------|---------------|
| 1 | DRAWING ROOM | 14'6" X 10'0" |
| 2 | KITCHEN | 6'6" X 12'0" |
| 3 | C. TOILET | 6'0" X 4'0" |
| 4 | M.BED ROOM | 11'0" X 10'0" |
| 4A | M. TOILET | 6'0" X 4'0" |
| 4B | BALCONY | 3'0" X 5'9" |
| 5 | C.BED ROOM | 10'0" X 9'0" |

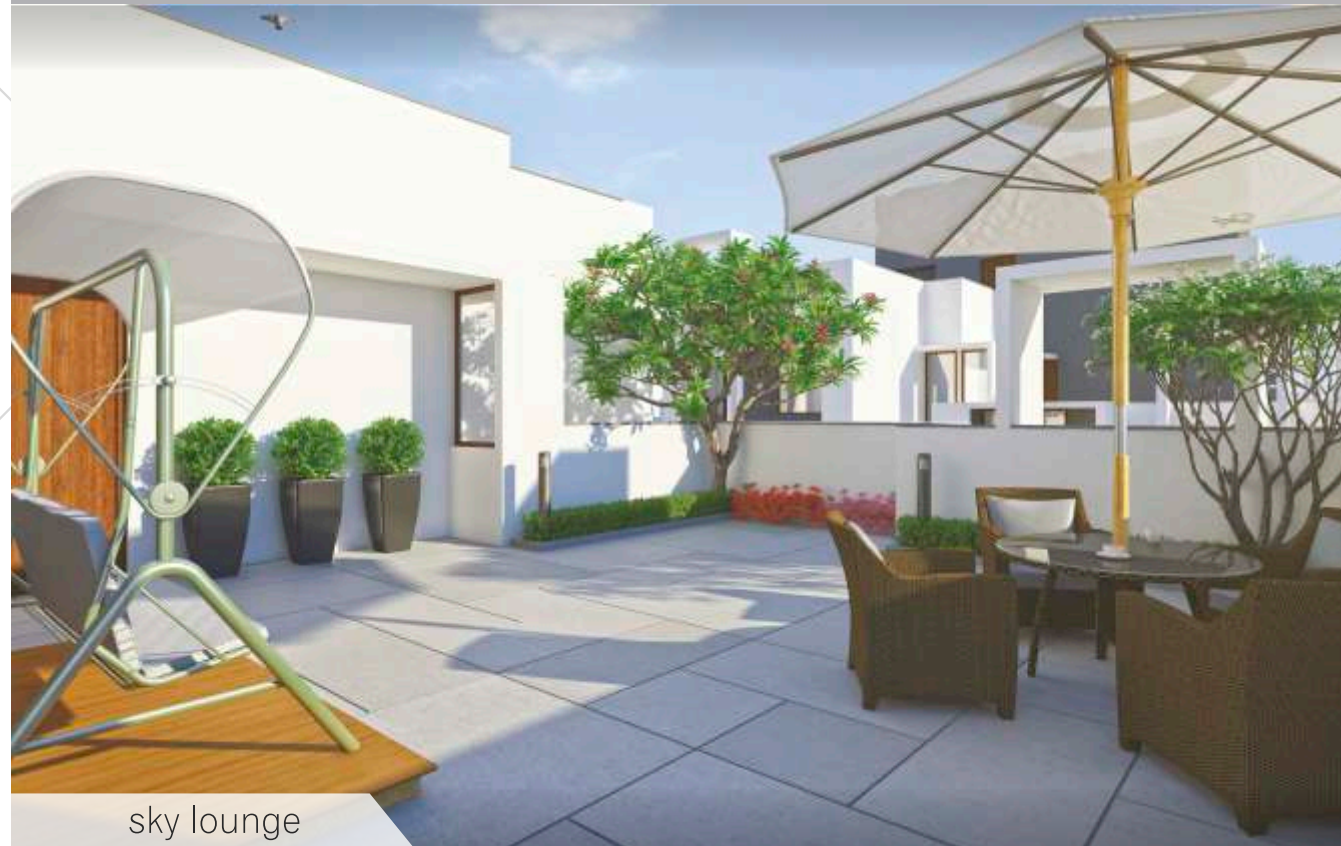


B-104

Reevanta



library & lounge



sky lounge



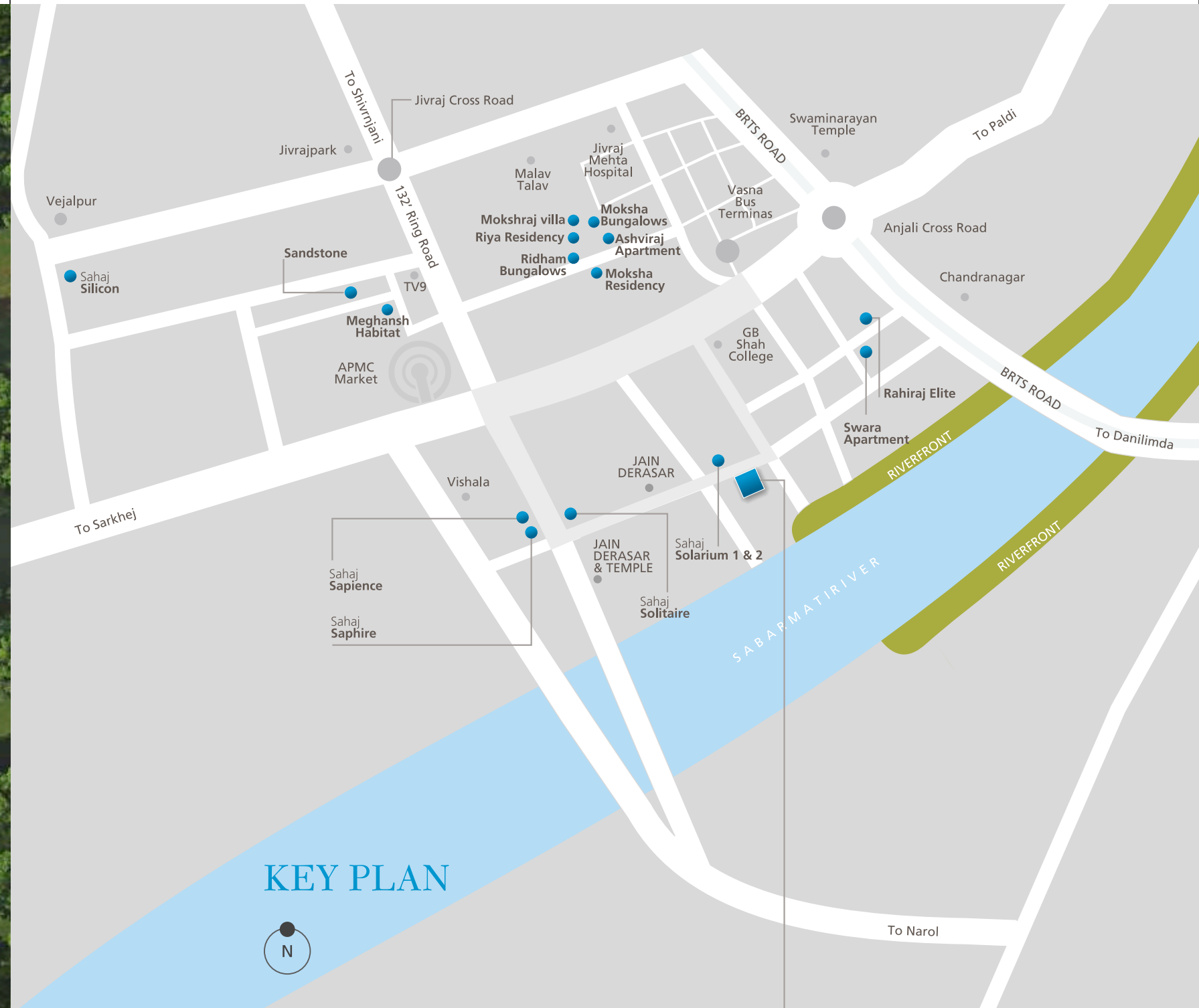
sport center



excellence night view



RAJYASH
Reevanta



SPECIFICATION

FLOORING :

20" X 20" Porcelain flooring in entire flat.

DOORS & WINDOWS :

Decorative main door with wooden frame.
Other wooden doors & aluminium windows.

WALL FINISH :

Internal: Smooth finished plaster with white wash.
External: Sandface plaster with acrylic paint.

ELECTRIFICATION :

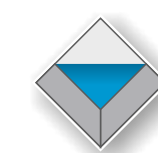
Concealed copper wiring with sufficient electric points in all rooms.

TOILETS :

Glazed tile dado up to 4 ft. Height in all toilets.

KITCHEN :

Granite platform with S.S. Sink and glazed tiles dado up to 2ft. heights.



RAJYASH Reevanta

Site: B/h. G.B. Shah College, B/s. Silver Flora, South Vasna, Ahmedabad

| | |
|-----------------------------|-----------|
| Vasna Bus Stand | : 1 kms |
| 132ft Ring Road | : 0.5 kms |
| Proposed BRTS Station | : 0.5 kms |
| Proposed Metro Rail Station | : 0.5 kms |

Note :

Good environment is the main feature of society and every member has to maintain it strictly.

The developer reserve the rights to change or revise or make any modifications, additions, omissions or alteration in the scheme as a whole or any part there of or any details therein, at their sole discretion without any prior notice. Such changes would be binding to all the members.

This brochure is just for an easy presentation of the project and should not be treated as a legal document.

All the dimensions given are approximate & unfinished

Subject to Ahmedabad jurisdiction.



RAJYASH
Excellence Endures!

ISO 9001:2008 Certified Company

www.rajyashgroup.com

CALL: +91 990 991 6464
+91 82380 43149

DEVELOPER
AVIRAJ CORPORATION

BEST PROJECT
AFFORDABLE LIVING RESIDENTIAL
SAHAJ SAPIENCE

WE CONTINUE THE EXCELLENCE



CORPORATE OFFICE:

305 - 405, Mauryansh Elanza, Nr. Parekh's Hospital, Shyamal Crossroad, Satellite, Ahmedabad, Gujarat, India.

