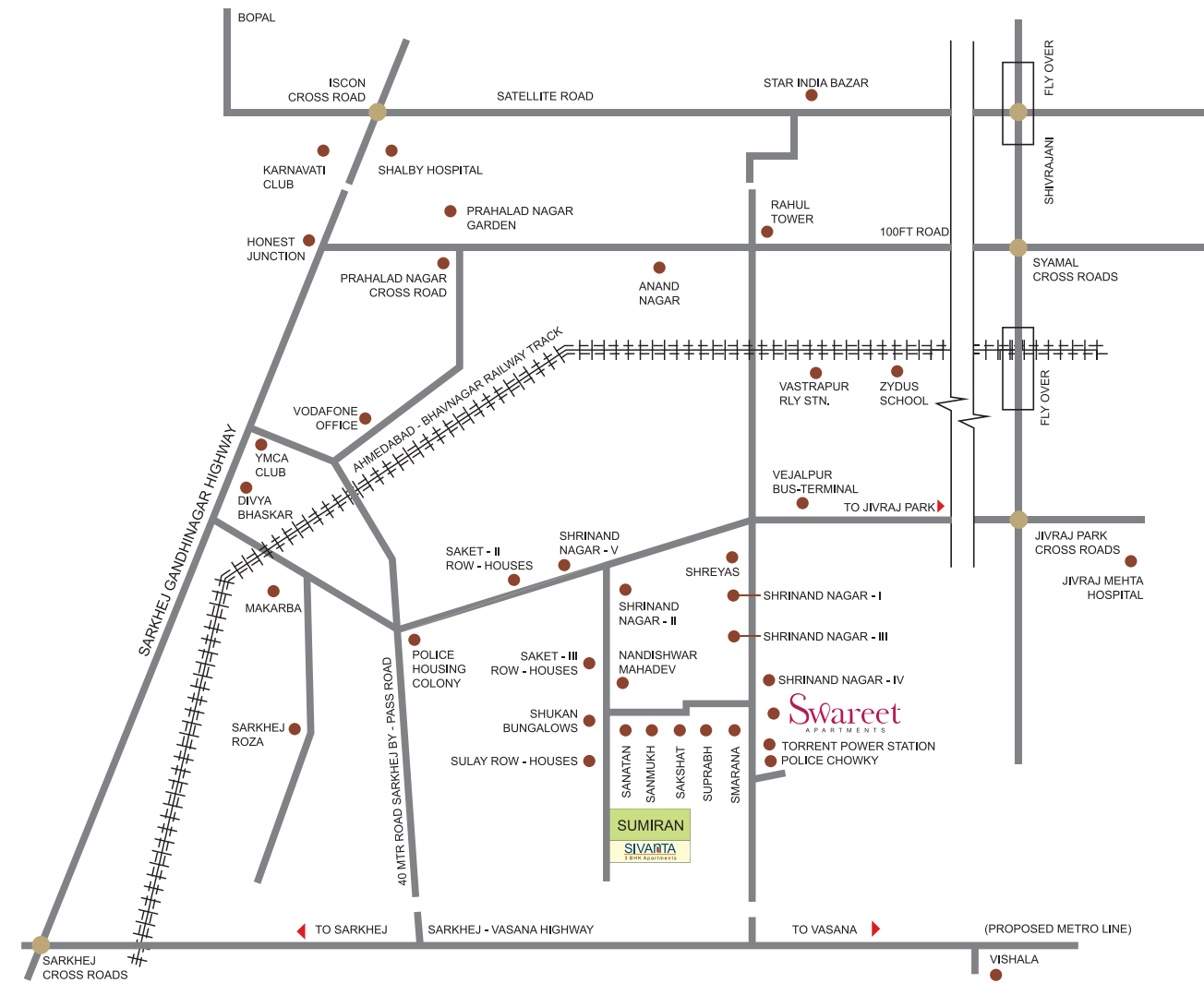


## LOCATION MAP

### Connectivity Chart

Key Distances		kms.
Commercial Area	Prahladnagar	1.5
Main Road	S.G Highway	2.3
School	Zydus School	3.0
School	A - One School	3.4
Hospital	Shalby Hospital	3.5
Hospital	Jivraj Mehta Hospital	3.4
Club	YMCA Club	3.0
Club	Karnavati Club	4.7
Entertainment	Gulmohar Park	3.6
Shopping Mall	Star Bazaar	3.5
Food Joint	Subway	2.5
Food Joint	KFC	2.5



**Swareet**  
APARTMENTS

1 BHK | 1.5 BHK | 2 BHK  
AND STUDIO APARTMENTS



Close to Prahladnagar

**Site:** Opposite Smarana Apartments, Bakeri City, Vejalpur, Ahmedabad. Call: +91 98795 06513

**Bakeri Group:** 'SANSKRUT', Near Old High Court, Off Ashram Road, Ahmedabad.

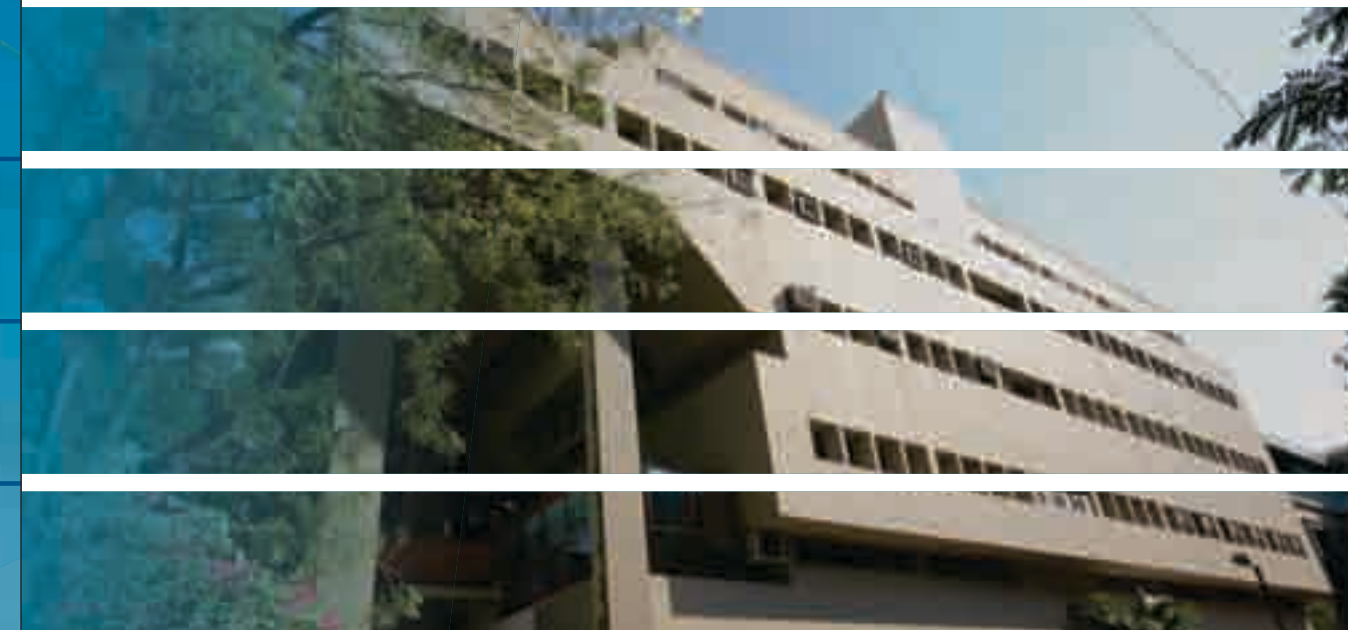
Ph.: 079 - 4000 1300 | sales@bakeri.com | [f](#) bakerigroup

**Disclaimer:** The plans, specifications, images, and other details herein are only indicative and the Developer / Owner / Project Consultants reserves the right to change any or all of these in the interest of the development. This printed material does not constitute an offer and/or contract of any type between the Developer / Owner / Project Developer and the recipient or any other person. Any purchaser / lessee of any unit shall be governed by the terms and conditions of the Agreement to Sell and/or any other documents, etc. entered into between the parties, and no details mentioned in this printed material shall in any way govern such transactions. Variation in the unit areas on account of design and construction variances is possible.



THE MUSIC OF A  
SWEET LIFE  
**Swareet**  
APARTMENTS

# THE COMPOSER



**bakeri**  
since 1959

Environment  
is our Attitude

- Bakeri Group, a name synonymous with real estate in Gujarat, is one of the oldest and most reliable real estate developers in India known for trust, transparency and ethics, SINCE 1959
- Developed more than 17 million sq. ft. (1.58 million sq. mts.) of noteworthy constructed landmarks and more than 25 million sq. ft. (2.32 million sq. mts.) of plotted developments
- First developer in India to be awarded the highest PA-1 rating by CRISIL
- More than 1.25 lakhs valued members are part of the Bakeri Family
- Environment has been a focal point in all its projects and thus adequate care is taken to minimize impact on natural environment through
- Always strives to surpass customer expectations in terms of quality, innovation, environment friendly designs and prudent business policies

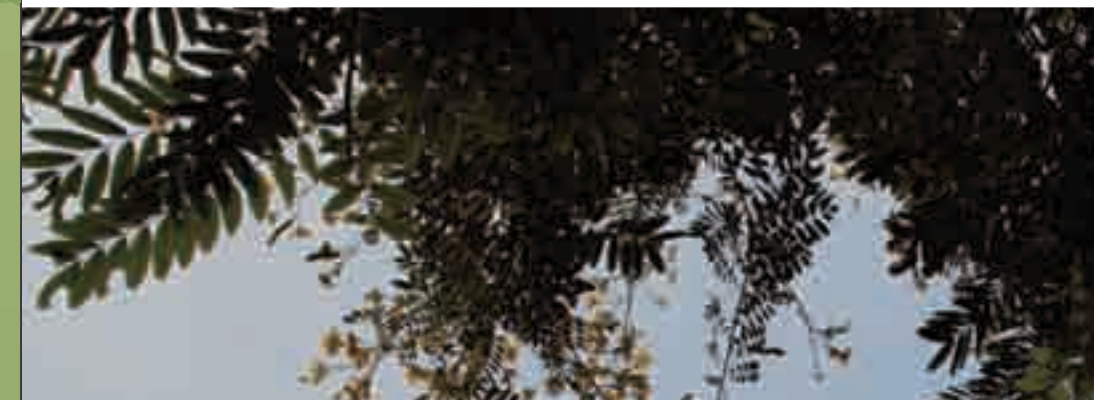
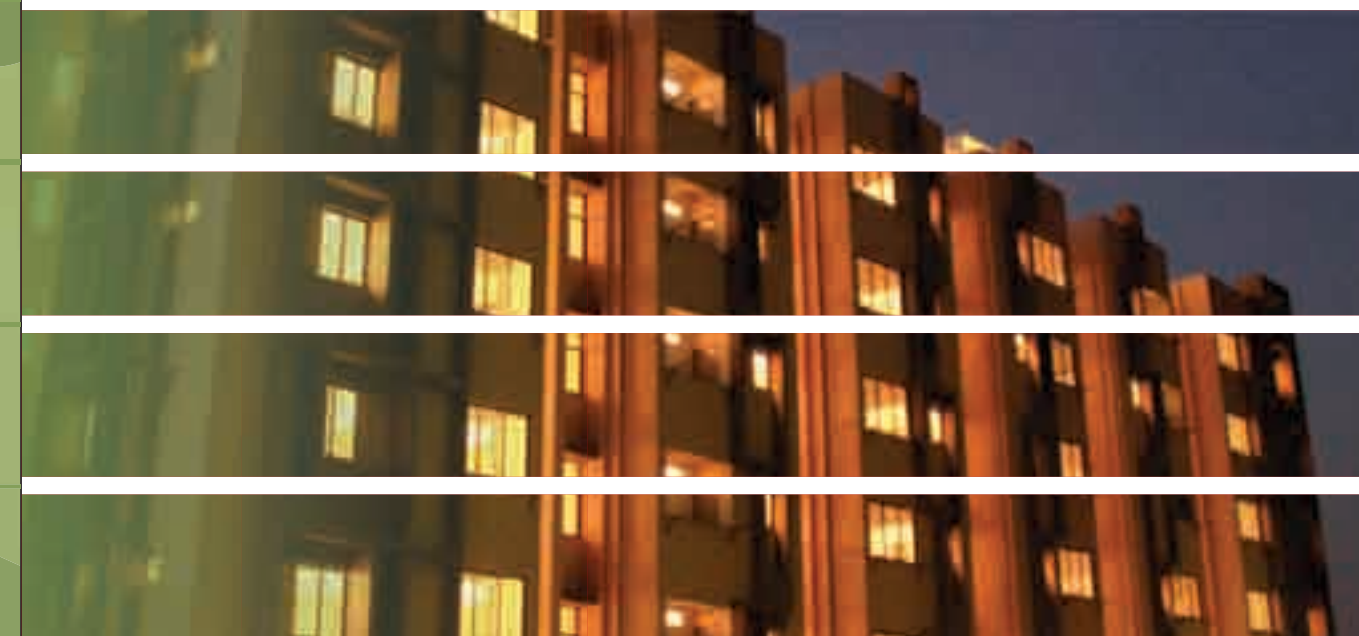
# A PROPOSITION SO MUSICAL!

Swareet not only brings forth studio, 1, 1.5 and 2 BHK apartments, it also brings you so much more.

Located right in the midst of Ahmedabad city, Swareet offers you a host of amenities and energy efficient features. Every unit, including 1 BHK apartments, comes with a free allotted parking for one car and 2 two wheelers.

Something you will seldom see with any other 1 BHK apartment!

**Swareet**  
APARTMENTS



# CENTRE STAGE PERFORMANCE

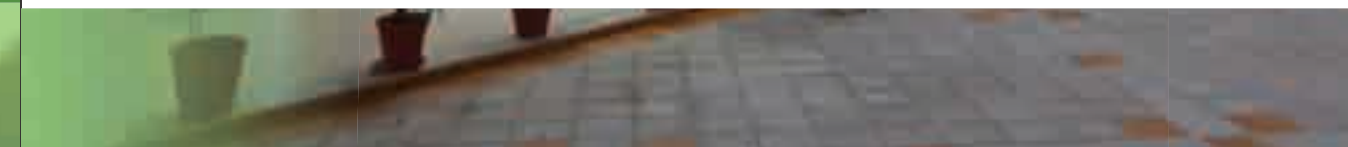
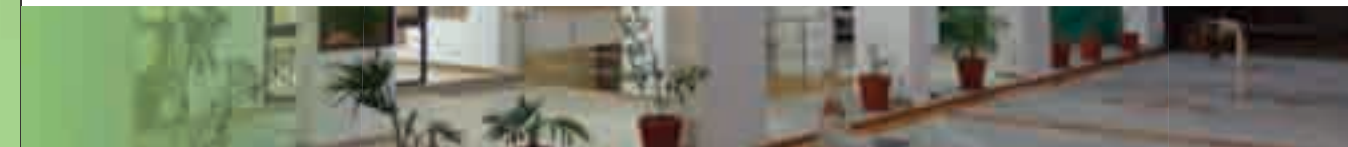


Firmly ensconced within the much admired Bakeri City, right in the heart of Ahmedabad city, Swareet spells easy accessibility to all the areas of the city. Whether it is for education, work or leisure, every trip becomes pleasant.

- Located opposite Smarana Apartments, Bakeri City, Close to Prahladnagar, Vejalpur
- The project is part of well developed Bakeri City which comprises of more than 5.000 residential units
- Just 5 minutes drive from Prahladnagar
- Prime areas of S. G. Road and 100 ft. Road close by



# THE LYRICAL SPECIFICATIONS



## FLOORING

- Vitrified Tiles in Living / Dining Room and Porcelain tiles in all other rooms

## TOILETS

- Anti skid floor tiles
- Dado up to lintel level
- Good quality sanitary fittings

## KITCHEN

- Granite platform with S.S. Sink and dado of glazed tiles up to lintel level

## WALL FINISHES

- Exterior walls having double coated plaster with acrylic paint
- Interior walls having putty finish in living and dining room and plaster finish with lime-wash in all other rooms

## DOORS – WINDOWS

- Main door with wooden frame and decorative shutter
- All other doors with stone frames and flush doors
- All powder coated aluminium windows with full glass and safety grills

## ELECTRIFICATION

- Single phase concealed copper wiring with necessary points for geyser/s and air conditioner/s

## OTHERS

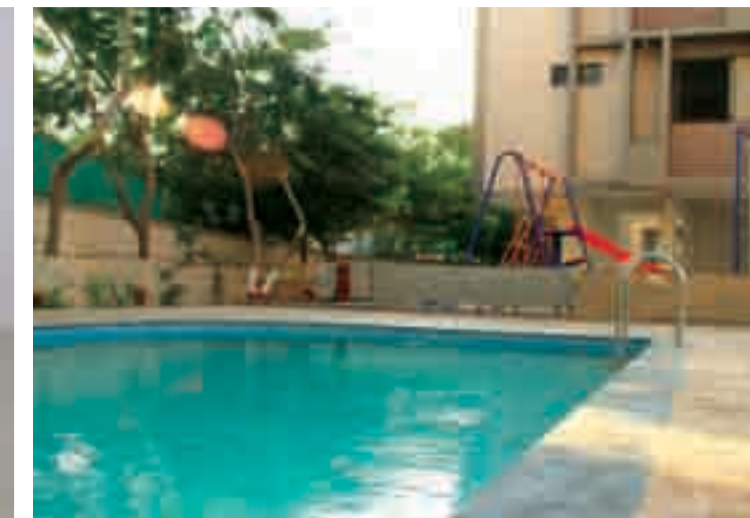
- Extra brick- bat concrete in addition to the usual thickness of the slab, totalling 7" thick for better thermal insulation of top floor apartments to reduce the heat of summer months
- China mosaic flooring and water proofing on terraces
- Standard floor height will be 2.75 mtrs.

# A WELL BALANCED SCORE



## FEATURES AND AMENITIES AT SWAREET

Free allotted parking space for two and four wheelers • Safe deposit vaults • Splash pool and Gymnasium • Indoor games • Conference room • Multi-activity room • Children's play area and senior citizens' sit outs • 24 hours water supply/ tube well • School bus pick-up zone



# THE UNIVERSAL APPEAL



**Other than the amenities of Swareet, you have a free access to the amenities of Bakeri City.**

- Nandishwar Mahadev Temple
- Jain Temple
- Day Care Centre
- Pre- primary School
- Kahaani @ Bakeri Sports Academy



# ENVIRONMENT FRIENDLY ORCHESTRATION



FRIENDLY



**Like you, the environment is also taken care of, at Swareet.**

Be it water recharging system or China Mosaic flooring on terrace to reduce radiation and heat within the residential unit or be it scientific plantation within and on boundaries of the project to reduce noise and pollution from surroundings, apartments have been designed for optimal natural light and cross ventilation

